

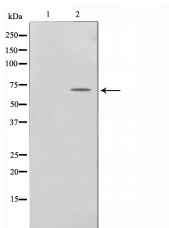
Phospho-Paxillin(Ser178) Ab

Cat.#: AF0054
Size: 100ul,200ul

Concn.: 1mg/ml
Source: Rabbit

Mol.Wt.: 64kDa
Clonality: Polyclonal

Application:	WB 1:500-1:2000
Reactivity:	Human,Mouse,Rat
Purification:	The Ab is from purified rabbit serum by affinity purification via sequential chromatography on phospho-peptide and non-phospho-peptide affinity columns.
Specificity:	Phospho-Paxillin(Ser178) Ab detects endogenous levels of Paxillin only when phosphorylated at Sersine 178.
Immunogen:	A synthesized peptide derived from human Paxillin around the phosphorylation site of Ser178.
Uniprot:	P49023
Description:	PXN is a multi-domain cytoskeletal protein that localizes primarily to focal adhesion sites to the extracellular matrix. Phosphorylated by focal adhesion kinase (FAK) and is a component of integrin signaling. Its phosphorylation provides docking sites for recruitment of signaling molecules to focal adhesions. The SH2 domain of Crk binds to tyrosine phosphorylated paxillin. Three alternatively-spliced isoforms have been described.
Subcellular Location:	Cytoplasm > cytoskeleton. Cell junction > focal adhesion.
Similarity:	Belongs to the paxillin family.
Storage Condition and Buffer:	Rabbit IgG in phosphate buffered saline , pH 7.4, 150mM NaCl, 0.02% sodium azide and 50% glycerol.Store at -20 °C.Stable for 12 months from date of receipt.



Western blot analysis on HeLa cell lysates using Phospho-Paxillin(Ser178) Ab,The lane on the left was treated with the antigen-specific peptide.

IMPORTANT: For western blot, incubate membrane with diluted primary Ab in 5% w/v milk , 1X TBS, 0.1% Tween@20 at 4°C with gentle shaking,

overnight.

For Research Use Only. Not for use in diagnostic and therapeutic procedures. Not for resale without express authorization.