

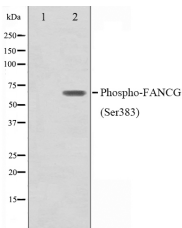
Phospho-FANCG(Ser383) Ab

Cat.#: AF0055
 Size: 100ul,200ul

Concn.: 1mg/ml
 Source: Rabbit

Mol.Wt.: 69kDa
 Clonality: Polyclonal

Application:	WB 1:500-1:2000
Reactivity:	Human
Purification:	The Ab is from purified rabbit serum by affinity purification via sequential chromatography on phospho-peptide and non-phospho-peptide affinity columns.
Specificity:	Phospho-FANCG(Ser383) Ab detects endogenous levels of FANCG only when phosphorylated at Sersine 383.
Immunogen:	A synthesized peptide derived from human FANCG around the phosphorylation site of Ser383.
Uniprot:	O15287
Description:	FANCG DNA repair protein that may operate in a postreplication repair or a cell cycle checkpoint function. May be implicated in interstrand DNA cross-link repair and in the maintenance of normal chromosome stability. Candidate tumor suppressor gene. Belongs to the multisubunit FA complex composed of FANCA, FANCB, FANCC, FANCE, FANCF, FANCG, FANCL/PHF9 and FANCM. The complex is not found in FA patients. Note: This description may include information from UniProtKB.
Subcellular Location:	Nucleus. Cytoplasm. The major form is nuclear. The minor form is cytoplasmic.
Tissue Specificity:	Highly expressed in testis and thymus. Found in lymphoblasts.
Storage Condition and Buffer:	Rabbit IgG in phosphate buffered saline , pH 7.4, 150mM NaCl, 0.02% sodium azide and 50% glycerol.Store at -20 °C.Stable for 12 months from date of receipt.



Western blot analysis on K562 cell lysates using Phospho-FANCG(Ser383) Ab,The lane on the left was treated with the antigen-specific peptide.

IMPORTANT: For western blot, incubate membrane with diluted primary Ab in 5% w/v milk , 1X TBS, 0.1% Tween@20 at 4°C with gentle shaking, overnight.

For Research Use Only. Not for use in diagnostic and therapeutic procedures. Not for resale without express authorization.