

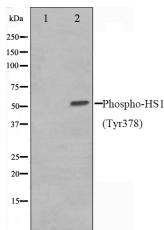
Phospho-HS1(Tyr378) Ab

Cat.#: AF0063
Size: 100ul,200ul

Concn.: 1mg/ml
Source: Rabbit

Mol.Wt.: 78kDa
Clonality: Polyclonal

Application:	WB 1:500-1:2000
Reactivity:	Human
Purification:	The Ab is from purified rabbit serum by affinity purification via sequential chromatography on phospho-peptide and non-phospho-peptide affinity columns.
Specificity:	Phospho-HS1(Tyr378) Ab detects endogenous levels of HS1 only when phosphorylated at Tyrosine 378.
Immunogen:	A synthesized peptide derived from human HS1 around the phosphorylation site of Tyr378.
Uniprot:	P14317
Description:	Substrate of the antigen receptor-coupled tyrosine kinase. Plays a role in antigen receptor signaling for both clonal expansion and deletion in lymphoid cells. Directly associates with HAX-1, through binding to its C-terminal region. May also be involved in the regulation of gene expression.
Subcellular Location:	Membrane. Cytoplasm. Mitochondrion.
Tissue Specificity:	Expressed only in tissues and cells of hematopoietic origin.
Storage Condition and Buffer:	Rabbit IgG in phosphate buffered saline , pH 7.4, 150mM NaCl, 0.02% sodium azide and 50% glycerol.Store at -20 °C.Stable for 12 months from date of receipt.



Western blot analysis on HepG2 cell lysates using Phospho-HS1(Tyr378) Ab, The lane on the left was treated with the antigen-specific peptide.

IMPORTANT: For western blot, incubate membrane with diluted primary Ab in 5% w/v milk , 1X TBS, 0.1% Tween@20 at 4°C with gentle shaking, overnight.



Affinity Biosciences
website: www.affbiotech.com
order: order@affbiotech.com

procedures. Not for resale without express authorization.