

## Phospho-ALK(Tyr1604) Ab

Cat.#: AF2311	Concn.: 1mg/ml	Mol.Wt.: 80 (NPM-ALK) 220 (ALK)kDa
Size: 100ul,200ul	Source: Rabbit	Clonality: Polyclonal

Application: WB 1:500-1:2000, IHC 1:50-1:200

Reactivity: Human

Purification: The Ab is from purified rabbit serum by affinity purification via sequential chromatography on phospho-peptide and non-phospho-peptide affinity columns.

Specificity: Phospho-ALK(Tyr1604) Ab detects endogenous levels of ALK.

Immunogen: A synthesized peptide derived from human ALK around the phosphorylation site of Tyr1604.

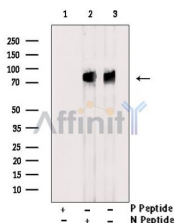
Uniprot: Q9UM73

Subcellular Location: Cell membrane. Membrane attachment was crucial for promotion of neuron-like differentiation and cell proliferation arrest through specific activation of the MAP kinase pathway.

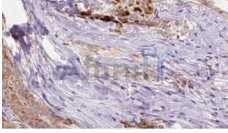
Tissue Specificity: Expressed in brain and CNS. Also expressed in the small intestine and testis, but not in normal lymphoid cells.

Similarity: Belongs to the protein kinase superfamily. Tyr protein kinase family. Insulin receptor subfamily.

Storage Condition and Buffer: Rabbit IgG in phosphate buffered saline , pH 7.4, 150mM NaCl, 0.02% sodium azide and 50% glycerol.Store at -20 °C.Stable for 12 months from date of receipt.



Western blot analysis of extracts from Sup-M2 cells, using Phospho-ALK(Tyr1604) Ab. Lane1 was treated with phospho-blocking peptide, Lane2 was treated with non-phospho-blocking peptide.



AF2311 at 1/100 staining Human thyroid cancer tissue by IHC-P. The sample was formaldehyde fixed and a heat mediated antigen retrieval step in citrate buffer was performed. The sample was then blocked and incubated with the Ab for 1.5 hours at 22°C. An HRP conjugated goat anti-rabbit Ab was used as the secondary.

**IMPORTANT:** For western blot, incubate membrane with diluted primary Ab in 5% w/v milk , 1X TBS, 0.1% Tween@20 at 4°C with gentle shaking, overnight.

For Research Use Only. Not for use in diagnostic and therapeutic procedures. Not for resale without express authorization.