

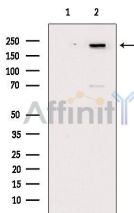
Phospho-Afadin (Ser1799) Ab

Cat.#: AF2315
 Size: 100ul,200ul

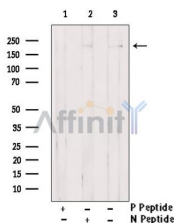
Concn.: 1mg/ml
 Source: Rabbit

Mol.Wt.: 205kDa
 Clonality: Polyclonal

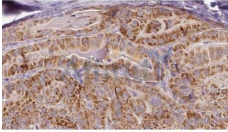
- Application:** WB 1:500-1:2000, IHC 1:50-1:200
- Reactivity:** Human,Monkey
- Purification:** The Ab is from purified rabbit serum by affinity purification via sequential chromatography on phospho-peptide and non-phospho-peptide affinity columns.
- Specificity:** Phospho-Afadin (Ser1799) Ab detects endogenous levels of Afadin.
- Immunogen:** A synthesized peptide derived from human Afadin around the phosphorylation site of Ser1799.
- Uniprot:** P55196
- Subcellular Location:** Cell junction > adherens junction. Not found at cell-matrix AJs.
- Similarity:** The PDZ/DHR domain interacts with the C-terminus of nectin and the Pro-rich C-terminal domain interacts with F-actin.
- Storage Condition and Buffer:** Rabbit IgG in phosphate buffered saline , pH 7.4, 150mM NaCl, 0.02% sodium azide and 50% glycerol.Store at -20 °C.Stable for 12 months from date of receipt.



Western blot analysis of extracts from heat-shock treated COS-7, using Phospho-Afadin (Ser1799) Ab. The lane on the left was treated with blocking peptide.



Western blot analysis of extracts from A431 cells treated with EGF, using Phospho-Afadin (Ser1799) Ab. Lane1 was treated with phospho-blocking peptide, Lane2 was treated with non-phospho-blocking peptide.



AF2315 at 1/100 staining Human thyroid cancer tissue by IHC-P. The sample was formaldehyde fixed and a heat mediated antigen retrieval step in citrate buffer was performed. The sample was then blocked and incubated with the Ab for 1.5 hours at 22°C. An HRP conjugated goat anti-rabbit Ab was used as the secondary.

IMPORTANT: For western blot, incubate membrane with diluted primary Ab in 5% w/v milk , 1X TBS, 0.1% Tween@20 at 4°C with gentle shaking, overnight.

For Research Use Only. Not for use in diagnostic and therapeutic procedures. Not for resale without express authorization.