

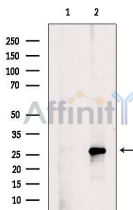
Phospho-Bim (Ser77) Ab

Cat.#: AF2325
Size: 100ul,200ul

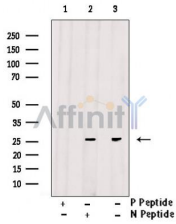
Concn.: 1mg/ml
Source: Rabbit

Mol.Wt.: 26kDa
Clonality: Polyclonal

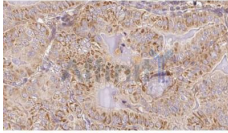
Application:	WB 1:500-1:2000, IHC 1:50-1:200
Reactivity:	Human,Mouse,Rat
Purification:	The Ab is from purified rabbit serum by affinity purification via sequential chromatography on phospho-peptide and non-phospho-peptide affinity columns.
Specificity:	Phospho-Bim (Ser77) Ab detects endogenous levels of Bim.
Immunogen:	A synthesized peptide derived from human Bim around the phosphorylation site of Ser77.
Uniprot:	O43521
Subcellular Location:	Mitochondrion and Endomembrane system. Associated with intracytoplasmic membranes.
Tissue Specificity:	Isoform BimEL, isoform BimL and isoform BimS are the predominant isoforms and are widely expressed with tissue-specific variation. Isoform Bim-gamma is most abundantly expressed in small intestine and colon, and in lower levels in spleen, prostate, testis, heart, liver and kidney.
Similarity:	The BH3 motif is required for interaction with Bcl-2 proteins and cytotoxicity.Belongs to the Bcl-2 family.
Storage Condition and Buffer:	Rabbit IgG in phosphate buffered saline , pH 7.4, 150mM NaCl, 0.02% sodium azide and 50% glycerol.Store at -20 °C.Stable for 12 months from date of receipt.



Western blot analysis of extracts from heat-shock treated A2780 cells, using Phospho-Bim (Ser77) Ab. The lane on the left was treated with blocking peptide.



Western blot analysis of extracts from MCF7 cells treated with TPA, using Phospho-Bim (Ser77) Ab. Lane1 was treated with phospho-blocking peptide, Lane2 was treated with non-phospho-blocking peptide.



AF2325 at 1/100 staining Human thyroid cancer tissue by IHC-P. The sample was formaldehyde fixed and a heat mediated antigen retrieval step in citrate buffer was performed. The sample was then blocked and incubated with the Ab for 1.5 hours at 22°C. An HRP conjugated goat anti-rabbit Ab was used as the secondary.

IMPORTANT: For western blot, incubate membrane with diluted primary Ab in 5% w/v milk , 1X TBS, 0.1% Tween@20 at 4°C with gentle shaking, overnight.

For Research Use Only. Not for use in diagnostic and therapeutic procedures. Not for resale without express authorization.