

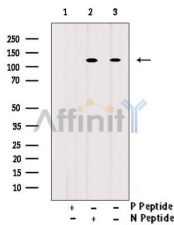
Phospho-CBL (Tyr700) Antibody

Cat.#: AF2328
Size: 100ul,200ul

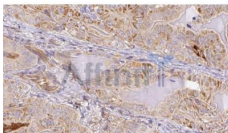
Concn.: 1mg/ml
Source: Rabbit

Mol.Wt.: 120kDa
Clonality: Polyclonal

| | |
|-------------------------------|--|
| Application: | WB 1:500-1:2000, IHC 1:50-1:200, ELISA(peptide) 1:20000-1:40000 |
| Reactivity: | Human,Mouse,Rat |
| Purification: | The antibody is from purified rabbit serum by affinity purification via sequential chromatography on phospho-peptide and non-phospho-peptide affinity columns. |
| Specificity: | Phospho-CBL (Tyr700) Antibody detects endogenous levels of CBL only when phosphorylated at Tyr700. |
| Immunogen: | A synthesized peptide derived from human CBL around the phosphorylation site of Tyr700. |
| Uniprot: | P22681 |
| Storage Condition and Buffer: | Rabbit IgG in phosphate buffered saline , pH 7.4, 150mM NaCl, 0.02% sodium azide and 50% glycerol.Store at -20 °C.Stable for 12 months from date of receipt. |



Western blot analysis of extracts from Jurkat treated with pervanadate, using Phospho-cbl (Tyr700) Antibody. Lane1 was treated with phospho-blocking peptide, Lane2 was treated with non-phospho-blocking peptide.



AF2328 at 1/100 staining Human thyroid cancer tissue by IHC-P. The sample was formaldehyde fixed and a heat mediated antigen retrieval step in citrate buffer was performed. The sample was then blocked and incubated with the antibody for 1.5 hours at 22°C. An HRP conjugated goat anti-rabbit antibody was used as the secondary antibody.

IMPORTANT: For western blot, incubate membrane with diluted primary Ab in 5% w/v milk , 1X TBS, 0.1% Tween@20 at 4°C with gentle shaking, overnight.