

# Phospho-Synuclein alpha (Tyr136) Antibody

Cat.#: AF3287	Concn.: 1mg/ml	Mol.Wt.: 18kDa
Size: 100ul,200ul	Source: Rabbit	Clonality: Polyclonal

**Application:** WB 1:500-1:2000, ELISA(peptide) 1:20000-1:40000  
 \*The optimal dilutions should be determined by the end user.

**Reactivity:** Human,Mouse,Rat

**Purification:** The antibody is from purified rabbit serum by affinity purification via sequential chromatography on phospho-peptide and non-phospho-peptide affinity columns.

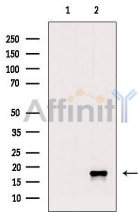
**Specificity:** Phospho-Synuclein alpha (Tyr136) Antibody detects endogenous levels of Synuclein alpha only when phosphorylated at Tyrosine 136.

**Immunogen:** A synthesized peptide derived from human Synuclein- alpha around the phosphorylation site of Tyr136.

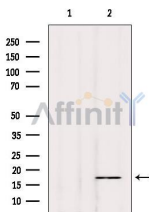
**Uniprot:** P37840

**Description:** Alpha-synuclein is a member of the synuclein family, which also includes beta- and gamma-synuclein. Synucleins are abundantly expressed in the brain and alpha- and beta-synuclein inhibit phospholipase D2 selectively.

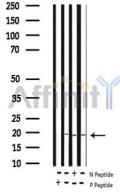
**Storage Condition and Buffer:** Rabbit IgG in phosphate buffered saline , pH 7.4, 150mM NaCl, 0.02% sodium azide and 50% glycerol.Store at -20 °C.Stable for 12 months from date of receipt.



Western blot analysis of extracts from H2O2 treated HUVEC cells, using Phospho-Synuclein alpha (Tyr136) Antibody. The lane on the left was treated with blocking peptide.



Western blot analysis of extracts from Hybridoma cells, using Phospho-Synuclein alpha (Tyr136) Antibody. Lane 1 was treated with the blocking peptide.



Western blot analysis of extracts from mouse brain/rat brain, using Phospho-Synuclein alpha (Tyr136) Antibody. -/+ means absence or presence of N peptide(non-phospho peptide) and P peptide(phospho peptide)

**IMPORTANT:** For western blot, incubate membrane with diluted primary Ab in 5% w/v milk , 1X TBS, 0.1% Tween@20 at 4°C with gentle shaking, overnight.

For Research Use Only. Not for use in diagnostic and therapeutic procedures. Not for resale without express authorization.