

## Phospho-p27 Kip1 (Ser10) Antibody

Cat.#: AF3326  
 Size: 100ul,200ul

Concn.: 1mg/ml  
 Source: Rabbit

Mol.Wt.: 27kDa  
 Clonality: Polyclonal

**Application:** WB 1:500-1:2000, IF/ICC 1:100-1:500, ELISA(peptide) 1:20000-1:40000

**Reactivity:** Human,Mouse,Rat

**Purification:** The antibody is from purified rabbit serum by affinity purification via sequential chromatography on phospho-peptide and non-phospho-peptide affinity columns.

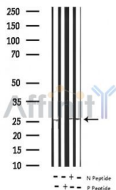
**Specificity:** Phospho-p27 Kip1 (Ser10) Antibody detects endogenous levels of p27 Kip1 only when phosphorylated at Serine 10.

**Immunogen:** A synthesized peptide derived from human p27 Kip1 around the phosphorylation site of Ser10.

**Uniprot:** P46527

**Description:** This gene encodes a cyclin-dependent kinase inhibitor, which shares a limited similarity with CDK inhibitor CDKN1A/p21. The encoded protein binds to and prevents the activation of cyclin E-CDK2 or cyclin D-CDK4 complexes, and thus controls the cell cycle progression at G1.

**Storage Condition and Buffer:** Rabbit IgG in phosphate buffered saline , pH 7.4, 150mM NaCl, 0.02% sodium azide and 50% glycerol.Store at -20 °C.Stable for 12 months from date of receipt.



Western blot analysis of extracts from rat heart/mouse lung, using Phospho-p27 Kip1 (Ser10) Antibody.  
 -/+ means absence or presence of N peptide(non-phospho peptide) and P peptide(phospho peptide)



AF3326 staining A2780 by IF/ICC. The sample were fixed with PFA and permeabilized in 0.1% Triton X-100,then blocked in 10% serum for 45 minutes at 25°C. The primary antibody was diluted at 1/200 and incubated with the sample for 1 hour at 37°C. An Alexa Fluor 594 conjugated goat anti-rabbit IgG (H+L) Ab, diluted at 1/600, was used as the secondary antibody.

**IMPORTANT:** For western blot, incubate membrane with diluted primary Ab in 5% w/v milk , 1X TBS, 0.1% Tween@20 at 4°C with gentle shaking, overnight.

For Research Use Only. Not for use in diagnostic and therapeutic procedures. Not for resale without express authorization.