

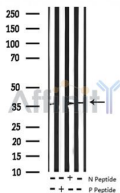
## Phospho-Ephrin B2 (Tyr330) Antibody

Cat.#: AF3343  
Size: 100ul,200ul

Concn.: 1mg/ml  
Source: Rabbit

Mol.Wt.: 37kDa  
Clonality: Polyclonal

Application:	WB 1:500-1:2000, ELISA(peptide) 1:20000-1:40000
Reactivity:	Human, Mouse, Rat
Purification:	The antibody is from purified rabbit serum by affinity purification via sequential chromatography on phospho-peptide and non-phospho-peptide affinity columns.
Specificity:	Phospho-Ephrin B2 (Tyr330) Antibody detects endogenous levels of Ephrin B2 only when phosphorylated at Tyrosine 330.
Immunogen:	A synthesized peptide derived from human Ephrin B2 around the phosphorylation site of Tyr330.
Uniprot:	P52799
Description:	This gene encodes a member of the ephrin (EPH) family. The ephrins and EPH-related receptors comprise the largest subfamily of receptor protein-tyrosine kinases and have been implicated in mediating developmental events, especially in the nervous system and in erythropoiesis.
Storage Condition and Buffer:	Rabbit IgG in phosphate buffered saline, pH 7.4, 150mM NaCl, 0.02% sodium azide and 50% glycerol. Store at -20 °C. Stable for 12 months from date of receipt.



Western blot analysis of extracts from rat lung/mouse heart, using Phospho-EFNB1/2 (Tyr330) Antibody.  
-/+ means absence or presence of N peptide (non-phospho peptide) and P peptide (phospho peptide)

**IMPORTANT:** For western blot, incubate membrane with diluted primary Ab in 5% w/v milk, 1X TBS, 0.1% Tween@20 at 4°C with gentle shaking, overnight.

For Research Use Only. Not for use in diagnostic and therapeutic procedures. Not for resale without express authorization.