

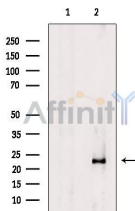
Phospho-RhoA (Ser188) Antibody

Cat.#: AF3352
Size: 100ul,200ul

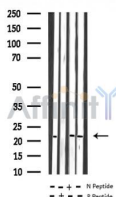
Concn.: 1mg/ml
Source: Rabbit

Mol.Wt.: 22kDa
Clonality: Polyclonal

Application:	WB 1:500-1:2000, ELISA(peptide) 1:20000-1:40000
Reactivity:	Human,Mouse,Rat,Monkey
Purification:	The antibody is from purified rabbit serum by affinity purification via sequential chromatography on phospho-peptide and non-phospho-peptide affinity columns.
Specificity:	Phospho-RhoA (Ser188) Antibody detects endogenous levels of RhoA only when phosphorylated at Serine 188.
Immunogen:	A synthesized peptide derived from human RhoA around the phosphorylation site of Ser188.
Uniprot:	P61586
Description:	RhoA is a small G protein of the Rho family. Regulates a signal transduction pathway linking plasma membrane receptors to the assembly of focal adhesions and actin stress fibers.
Storage Condition and Buffer:	Rabbit IgG in phosphate buffered saline , pH 7.4, 150mM NaCl, 0.02% sodium azide and 50% glycerol.Store at -20 °C.Stable for 12 months from date of receipt.



Western blot analysis of extracts from COS-7 cells, using Phospho-RhoA (Ser188) Antibody. The lane on the left was treated with blocking peptide.



Western blot analysis of extracts from rat lung/mouse brain, using Phospho-RhoA (Ser188) Antibody.
-/+ means absence or presence of N peptide(non-phospho peptide) and P peptide(phospho peptide)

IMPORTANT: For western blot, incubate membrane with diluted primary Ab

in 5% w/v milk , 1X TBS, 0.1% Tween@20 at 4°C with gentle shaking,
overnight.

For Research Use Only. Not for use in diagnostic and therapeutic
procedures. Not for resale without express authorization.