

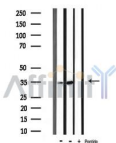
## Phospho-CDK5 (Tyr15) Antibody

Cat.#: AF3371  
 Size: 100ul,200ul

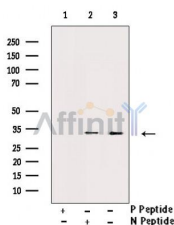
Concn.: 1mg/ml  
 Source: Rabbit

Mol.Wt.: 33kDa  
 Clonality: Polyclonal

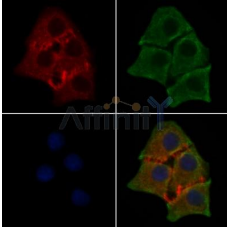
- Application:** WB 1:500-1:2000, IF/ICC 1:100-1:500, ELISA(peptide) 1:20000-1:40000
- Reactivity:** Human,Mouse,Rat,Monkey
- Purification:** The antibody is from purified rabbit serum by affinity purification via sequential chromatography on phospho-peptide and non-phospho-peptide affinity columns.
- Specificity:** Phospho-CDK5 (Tyr15) Antibody detects endogenous levels of CDK5 only when phosphorylated at Tyrosine 15.
- Immunogen:** A synthesized peptide derived from human CDK5 around the phosphorylation site of Tyr15.
- Uniprot:** Q00535
- Description:** CDK5 is a protein kinase of the CDK family. Unlike other members of this family, it is not activated by cyclins but by p35 (CDK5R1) and p39. An important regulator of neuronal positioning during brain development. May also play a role in synaptogenesis and neurotransmission.
- Storage Condition and Buffer:** Rabbit IgG in phosphate buffered saline , pH 7.4, 150mM NaCl, 0.02% sodium azide and 50% glycerol.Store at -20 °C.Stable for 12 months from date of receipt.



Western blot analysis of CDK5 phosphorylation expression in mouse brain and mouse muscle cell lysates,The lane on the right was treated with the antigen-specific peptide.



Western blot analysis of Phospho-CDK5 (Tyr15) Antibody expression in EGF treated COS7 cells lysates.The lane on the right was treated with the antigen-specific peptide.



AF3371 staining HepG2 cells(30min of 4uM Forskolin treatment) by IF/ICC. The samples were fixed with PFA and permeabilized in 0.1% Triton X-100,then blocked in 10% serum for 45 minutes at 25°C. Samples were then incubated with primary Ab(AF3371) and mouse anti-beta tubulin Ab(T0023) for 1 hour at 37°C. An AlexaFluor594 conjugated goat anti-rabbit IgG(H+L) Ab(Red) and an AlexaFluor488 conjugated goat anti-mouse IgG(H+L) Ab(Green) were used as

**IMPORTANT:** For western blot, incubate membrane with diluted primary Ab in 5% w/v milk , 1X TBS, 0.1% Tween@20 at 4°C with gentle shaking, overnight.

For Research Use Only. Not for use in diagnostic and therapeutic procedures. Not for resale without express authorization.