

Phospho-NF kappaB p100/p52 (Ser866) Antibody

Cat.#: AF3373
Size: 100ul,200ul

Concn.: 1mg/ml
Source: Rabbit

Mol.Wt.: 100kDa
Clonality: Polyclonal

Application: WB 1:500-1:2000, IHC 1:50-1:200, IP, IF/ICC 1:100-1:500, ELISA(peptide) 1:20000-1:40000

Reactivity: Human,Mouse,Rat

Purification: The antibody is from purified rabbit serum by affinity purification via sequential chromatography on phospho-peptide and non-phospho-peptide affinity columns.

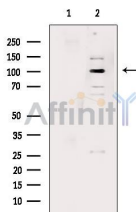
Specificity: Phospho-NF kappaB p100/p52 (Ser866) Antibody detects endogenous levels of NF kappaB p100/p52 only when phosphorylated at Serine 866.

Immunogen: A synthesized peptide derived from human NF- kappaB p100/p52 around the phosphorylation site of Ser866.

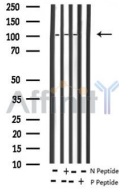
Uniprot: Q00653

Description: NFkB-p100 a transcription factor of the nuclear factor-kappaB (NFkB) group. Precursor of the p52 subunit of the nuclear factor NF-kappa-B, which binds to the kappa-B consensus sequence 5'-GGRNNYYCC-3', located in the enhancer region of genes involved in immune response and acute phase reactions.

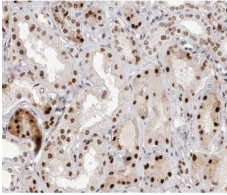
Storage Condition and Buffer: Rabbit IgG in phosphate buffered saline , pH 7.4, 150mM NaCl, 0.02% sodium azide and 50% glycerol.Store at -20 °C.Stable for 12 months from date of receipt.



Western blot analysis of extracts from LPS treated RAW264.7 cells, using Phospho-NF kappaB p100/p52 (Ser866) Antibody. The lane on the left was treated with blocking peptide.



Western blot analysis of extracts from mouse spleen/rat lung, using Phospho-NF kappaB p100/p52 (Ser866) Antibody. -/+ means absence or presence of N peptide(non-phospho peptide) and P peptide(phospho peptide)



AF3373 at 1/200 staining human kidney tissue sections by IHC-P. The tissue was formaldehyde fixed and a heat mediated antigen retrieval step in citrate buffer was performed. The tissue was then blocked and incubated with the antibody for 1.5 hours at 22°C. An HRP conjugated goat anti-rabbit antibody was used as the secondary antibody.



AF3373 staining RAW264.7 by IF/ICC. The sample were fixed with PFA and permeabilized in 0.1% Triton X-100,then blocked in 10% serum for 45 minutes at 25°C. The primary antibody was diluted at 1/200 and incubated with the sample for 1 hour at 37°C. An Alexa Fluor 594 conjugated goat anti-rabbit IgG (H+L) Ab, diluted at 1/600, was used as the secondary antibody.

IMPORTANT: For western blot, incubate membrane with diluted primary Ab in 5% w/v milk , 1X TBS, 0.1% Tween@20 at 4°C with gentle shaking, overnight.

For Research Use Only. Not for use in diagnostic and therapeutic procedures. Not for resale without express authorization.