

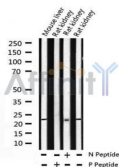
Phospho-Caveolin 1 (Tyr14) Antibody

Cat.#: AF3386
Size: 100ul,200ul

Concn.: 1mg/ml
Source: Rabbit

Mol.Wt.: 23kDa
Clonality: Polyclonal

Application:	WB 1:500-1:2000, IF/ICC 1:100-1:500, ELISA(peptide) 1:20000-1:40000
Reactivity:	Human,Mouse,Rat
Purification:	The antibody is from purified rabbit serum by affinity purification via sequential chromatography on phospho-peptide and non-phospho-peptide affinity columns.
Specificity:	Phospho-Caveolin 1 (Tyr14) Antibody detects endogenous levels of Caveolin 1 only when phosphorylated at Tyrosine 14.
Immunogen:	A synthesized peptide derived from human Caveolin 1 around the phosphorylation site of Tyr14.
Uniprot:	Q03135
Description:	caveolin-1 May act as a scaffolding protein within caveolar membranes. Interacts directly with G-protein alpha subunits and can functionally regulate their activity. Involved in the costimulatory signal essential for T-cell receptor (TCR)-mediated T-cell activation.
Storage Condition and Buffer:	Rabbit IgG in phosphate buffered saline , pH 7.4, 150mM NaCl, 0.02% sodium azide and 50% glycerol.Store at -20 °C.Stable for 12 months from date of receipt.



Western blot analysis of extracts from mouse liver/rat kidney, using Phospho-Caveolin-1 (Tyr14) Antibody.
-/+ means absence or presence of N peptide(non-phospho peptide) and P peptide(phospho peptide)



AF3386 staining HuvEc cells by IF/ICC. The sample were fixed with PFA and permeabilized in 0.1% Triton X-100,then blocked in 10% serum for 45 minutes at 25°C. The primary antibody was diluted at 1/200 and incubated with the sample for 1 hour at 37°C. An Alexa Fluor 594 conjugated goat anti-rabbit IgG (H+L) antibody(Red), diluted at 1/600, was used as secondary antibody.

IMPORTANT: For western blot, incubate membrane with diluted primary Ab in 5% w/v milk , 1X TBS, 0.1% Tween@20 at 4°C with gentle shaking, overnight.

For Research Use Only. Not for use in diagnostic and therapeutic procedures. Not for resale without express authorization.