

Phospho-Parkin (Ser65) Antibody

Cat.#: AF3500	Concn.: 1mg/ml	Mol.Wt.:
Size: 100ul,200ul	Source: Rabbit	Clonality: Polyclonal

Application: WB 1:500-2000, ELISA(peptide) 1:20000-1:40000
 *The optimal dilutions should be determined by the end user.

Reactivity: Human,Mouse,Rat

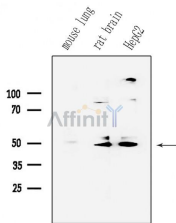
Purification: The antibody is from purified rabbit serum by affinity purification via sequential chromatography on phospho-peptide and non-phospho-peptide affinity columns.

Specificity: Phospho-Parkin (Ser65) Antibody detects endogenous levels of Parkin only when phosphorylated at Ser65.

Immunogen: A synthesized peptide derived from human Parkin around the phosphorylation site of Ser65.

Uniprot: O60260

Storage Condition and Buffer: Rabbit IgG in phosphate buffered saline , pH 7.4, 150mM NaCl, 0.02% sodium azide and 50% glycerol.Store at -20 °C.Stable for 12 months from date of receipt.



Western blot analysis on mouse brain cell lysates using Parkin Antibody. The lane on the left was treated with the antigen-specific peptide.

IMPORTANT: For western blot, incubate membrane with diluted primary Ab in 5% w/v milk , 1X TBS, 0.1% Tween@20 at 4°C with gentle shaking, overnight.

For Research Use Only. Not for use in diagnostic and therapeutic procedures. Not for resale without express authorization.