

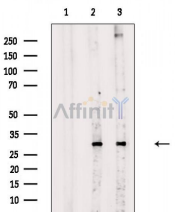
## Phospho-DKK1 (Ser140) Antibody

Cat.#: AF4300  
 Size: 100ul,200ul

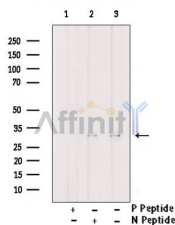
Concn.: 1mg/ml  
 Source: Rabbit

Mol.Wt.: 28-40kDa  
 Clonality: Polyclonal

- Application:** WB 1:500-1:2000, ELISA(peptide) 1:20000-1:40000  
 \*The optimal dilutions should be determined by the end user.
- Reactivity:** Human,Mouse
- Purification:** The antibody is from purified rabbit serum by affinity purification via sequential chromatography on phospho-peptide and non-phospho-peptide affinity columns.
- Specificity:** Phospho-DKK1 (Ser140) Antibody detects endogenous levels of DKK1 only when phosphorylated at Ser140.
- Immunogen:** A synthesized peptide derived from human DKK1 around the phosphorylation site of Ser140.
- Uniprot:** O94907
- Storage Condition and Buffer:** Rabbit IgG in phosphate buffered saline , pH 7.4, 150mM NaCl, 0.02% sodium azide and 50% glycerol.Store at -20 °C.Stable for 12 months from date of receipt.



Western blot analysis of extracts from various samples, using Phospho-DKK1 (Ser140) Antibody.  
 Lane 1: Mouse lung, blocked with antigen-specific peptides,  
 Lane 2: Mouse lung,  
 Lane 3: RAW264.7 cells(LPS 4h treatment).



Western blot analysis of extracts from PC-3 , using Phospho-DKK1(Ser140) Antibody. Lane1 was treated with phospho-blocking peptide, Lane2 was treated with non-phospho-blocking peptide.

**IMPORTANT:** For western blot, incubate membrane with diluted primary Ab in 5% w/v milk , 1X TBS, 0.1% Tween@20 at 4°C with gentle shaking, overnight.