

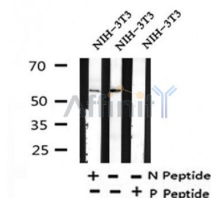
Phospho-PTEN (Ser380/Thr382/383) Ab

Cat.#: AF4450
 Size: 100ul,200ul

Concn.: 1mg/ml
 Source: Rabbit

Mol.Wt.: 55kDa
 Clonality: Polyclonal

Application:	WB 1:500-1:2000
Reactivity:	Human,Mouse,Rat
Purification:	The Ab is from purified rabbit serum by affinity purification via sequential chromatography on phospho- and non-phospho-peptide affinity columns.
Specificity:	Phospho-PTEN (Ser380/Thr382/383) Ab detects endogenous levels of PTEN only when phosphorylated at Ser380/Thr382/383.
Immunogen:	A synthesized peptide derived from human PTEN around the phosphorylation site of Ser380/Thr382/383.
Uniprot:	P60484
Subcellular Location:	Secreted. May be secreted via a classical signal peptide and reenter into cells with the help of a poly-Arg motif and Cytoplasm. Nucleus. Nucleus, PML body. Monoubiquitinated form is nuclear. Nonubiquitinated form is cytoplasmic. Colocalized with PML and USP7 in PML nuclear bodies. XIAP/BIRC4 promotes its nuclear localization.
Tissue Specificity:	Expressed at a relatively high level in all adult tissues, including heart, brain, placenta, lung, liver, muscle, kidney and pancreas.
Similarity:	The C2 domain binds phospholipid membranes in vitro in a Ca ²⁺ -independent manner; this binding is important for its tumor suppressor function.
Storage Condition and Buffer:	Rabbit IgG in phosphate buffered saline , pH 7.4, 150mM NaCl, 0.02% sodium azide and 50% glycerol.Store at -20 °C.Stable for 12 months from date of receipt.



Western blot analysis of Phospho-PTEN (Ser380/Thr382/383) in lysates of NIH-3T3, using Phospho-PTEN (Ser380/Thr382/383) Ab(AF4450).

IMPORTANT: For western blot, incubate membrane with diluted primary Ab in 5% w/v milk , 1X TBS, 0.1% Tween@20 at 4°C with gentle shaking, overnight.

For Research Use Only. Not for use in diagnostic and therapeutic procedures. Not for resale without express authorization.