

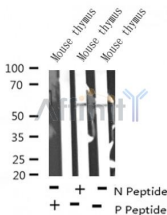
## Phospho-RUNX2 (S340) Ab

Cat.#: AF4470  
 Size: 100ul,200ul

Concn.: 1mg/ml  
 Source: Rabbit

Mol.Wt.: 50-60kDa  
 Clonality: Polyclonal

- Application:** WB 1:500-1:2000
- Reactivity:** Human,Mouse,Rat
- Purification:** The Ab is from purified rabbit serum by affinity purification via sequential chromatography on phospho-peptide and non-phospho-peptide affinity columns.
- Specificity:** RUNX2 (Phospho-S340) Ab detects endogenous levels of RUNX2 only when phosphorylated at S340.
- Immunogen:** A synthesized peptide derived from human RUNX2 around the phosphorylation site of S340.
- Uniprot:** Q13950
- Subcellular Location:** Nucleus.
- Tissue Specificity:** Specifically expressed in osteoblasts.
- Similarity:** A proline/serine/threonine rich region at the C-terminus is necessary for transcriptional activation of target genes and contains the phosphorylation sites.
- Storage Condition and Buffer:** Rabbit IgG in phosphate buffered saline , pH 7.4, 150mM NaCl, 0.02% sodium azide and 50% glycerol.Store at -20 °C.Stable for 12 months from date of receipt.



Western blot analysis of RUNX2 (Phospho-S340) in lysates of Mouse thymus , using RUNX2 (Phospho-S340) Ab(AF4470).

**IMPORTANT:** For western blot, incubate membrane with diluted primary Ab in 5% w/v milk , 1X TBS, 0.1% Tween@20 at 4°C with gentle shaking, overnight.

For Research Use Only. Not for use in diagnostic and therapeutic procedures. Not for resale without express authorization.