

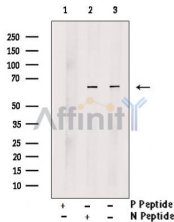
Phospho-PINK1 (Thr313) Antibody

Cat.#: AF4491
Size: 100ul,200ul

Concn.: 1mg/ml
Source: Rabbit

Mol.Wt.: 66kDa
Clonality: Polyclonal

Application:	WB 1:500-1:2000, ELISA(peptide) 1:20000-1:40000
Reactivity:	Human,Mouse
Purification:	The antibody is from purified rabbit serum by affinity purification via sequential chromatography on phospho-peptide and non-phospho-peptide affinity columns.
Specificity:	Phospho-PINK1 (Thr313) Antibody detects endogenous levels of PINK1 only when phosphorylated at T313.
Immunogen:	A synthesized peptide derived from human PINK1 around the phosphorylation site of T313.
Uniprot:	Q9BXM7
Storage Condition and Buffer:	Rabbit IgG in phosphate buffered saline , pH 7.4, 150mM NaCl, 0.02% sodium azide and 50% glycerol.Store at -20 °C.Stable for 12 months from date of receipt.



Western blot analysis of extracts from Jurkat , using Phospho-PINK1 (T313) Antibody. Lane1 was treated with phospho-blocking peptide, Lane2 was treated with non-phospho-

IMPORTANT: For western blot, incubate membrane with diluted primary Ab in 5% w/v milk , 1X TBS, 0.1% Tween@20 at 4°C with gentle shaking, overnight.

For Research Use Only. Not for use in diagnostic and therapeutic procedures. Not for resale without express authorization.