

## RUNX2 Ab

|                        |                |                       |
|------------------------|----------------|-----------------------|
| Cat.#: AF4770          | Concn.: 1mg/ml | Mol.Wt.: 50-60 kDa    |
| Size: 50ul,100ul,200ul | Source: Rabbit | Clonality: Polyclonal |

**Application:** WB 1:500-1:2000

**Reactivity:** Human,Mouse,Rat

**Purification:** The antiserum was purified by peptide affinity chromatography using SulfoLink™ Coupling Resin (Thermo Fisher Scientific).

**Specificity:** RUNX2 Ab detects endogenous levels of RUNX2.

**Immunogen:** A synthesized peptide derived from human RUNX2.

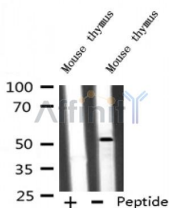
**Uniprot:** Q13950

**Subcellular Location:** Nucleus.

**Tissue Specificity:** Specifically expressed in osteoblasts.

**Similarity:** A proline/serine/threonine rich region at the C-terminus is necessary for transcriptional activation of target genes and contains the phosphorylation sites.

**Storage Condition and Buffer:** Rabbit IgG in phosphate buffered saline , pH 7.4, 150mM NaCl, 0.02% sodium azide and 50% glycerol.Store at -20 °C.Stable for 12 months from date of receipt.



Western blot analysis of RUNX2 in lysates of Mouse thymus , using RUNX2 Ab(AF4770).

**IMPORTANT:** For western blot, incubate membrane with diluted primary Ab in 5% w/v milk , 1X TBS, 0.1% Tween@20 at 4°C with gentle shaking, overnight.

For Research Use Only. Not for use in diagnostic and therapeutic procedures. Not for resale without express authorization.