

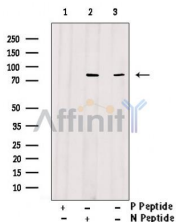
Phospho-ATRIP (Ser224) Antibody

Cat.#: AF5437
 Size: 100ul,200ul

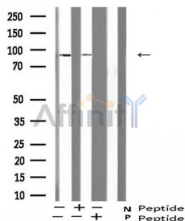
Concn.: 1mg/ml
 Source: Rabbit

Mol.Wt.: 85 kDa
 Clonality: Polyclonal

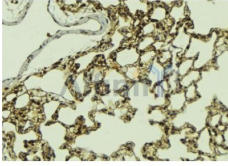
- Application:** WB 1:500-1:2000, IHC 1:50-1:200, ELISA(peptide) 1:20000-1:40000
- Reactivity:** Human,Mouse,Rat
- Purification:** The antibody is from purified rabbit serum by affinity purification via sequential chromatography on phospho-peptide and non-phospho-peptide affinity columns.
- Specificity:** Phospho-ATRIP (Ser224) Antibody detects endogenous levels of ATRIP only when phosphorylated at Ser224.
- Immunogen:** A synthesized peptide derived from human ATRIP around the phosphorylation site of Ser224.
- Uniprot:** Q8WXE1
- Description:** Required for checkpoint signaling after DNA damage. Required for ATR expression, possibly by stabilizing the protein.
- Storage Condition and Buffer:** Rabbit IgG in phosphate buffered saline , pH 7.4, 150mM NaCl, 0.02% sodium azide and 50% glycerol.Store at -20 °C.Stable for 12 months from date of receipt.



Western blot analysis of extracts from Human mammary cell, using Phospho-ATRIP (Ser224) Antibody. Lane1 was treated with phospho-blocking peptide, Lane2 was treated with non-phospho-blocking peptide.



Western blot analysis of ATRIP (Phospho-Ser224) expression in Human mammary cell lysate



AF5437 at 1/100 staining Mouse lung tissue by IHC-P. The sample was formaldehyde fixed and a heat mediated antigen retrieval step in citrate buffer was performed. The sample was then blocked and incubated with the antibody for 1.5 hours at 22°C. An HRP conjugated goat anti-rabbit antibody was used as the secondary antibody.

IMPORTANT: For western blot, incubate membrane with diluted primary Ab in 5% w/v milk , 1X TBS, 0.1% Tween@20 at 4°C with gentle shaking, overnight.

For Research Use Only. Not for use in diagnostic and therapeutic procedures. Not for resale without express authorization.