

## B Raf Antibody

Cat.#: AF6170  
Size: 100ul,200ul

Concn.: 1mg/ml  
Source: Rabbit

Mol.Wt.: 85kDa  
Clonality: Polyclonal

Application: WB 1:500-1:2000, IHC 1:50-1:200, ELISA(peptide)  
1:20000-1:40000, ELISA(peptide) 1:20000-1:40000

Reactivity: Human,Mouse,Rat

Purification: The antiserum was purified by peptide affinity chromatography using SulfoLink™ Coupling Resin (Thermo Fisher Scientific).

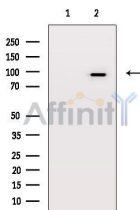
Specificity: B Raf Antibody detects endogenous levels of total B Raf.

Immunogen: A synthesized peptide derived from human B Raf, corresponding to a region within the internal amino acids.

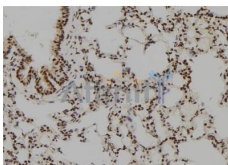
Uniprot: P15056

Description: B-Raf is a tyrosine kinase-like kinase of the RAF family. Involved in the transduction of mitogenic signals from the cell membrane to the nucleus. May play a role in the postsynaptic responses of hippocampal neuron.

Storage Condition and Buffer: Rabbit IgG in phosphate buffered saline , pH 7.4, 150mM NaCl, 0.02% sodium azide and 50% glycerol.Store at -20 °C.Stable for 12 months from date of receipt.



Western blot analysis of B-RAF expression in Hela whole cell lysates.The lane on the left was treated with the antigen-specific peptide.



AF6170 at 1/100 staining Rat lung tissue by IHC-P. The sample was formaldehyde fixed and a heat mediated antigen retrieval step in citrate buffer was performed. The sample was then blocked and incubated with the antibody for 1.5 hours at 22°C. An HRP conjugated goat anti-rabbit antibody was used as the secondary antibody.

in 5% w/v milk , 1X TBS, 0.1% Tween@20 at 4°C with gentle shaking, overnight.

For Research Use Only. Not for use in diagnostic and therapeutic procedures. Not for resale without express authorization.