

## Phospho-FABP1 (Ser11) Antibody

Cat.#: AF7055  
 Size: 100ul,200ul

Concn.: 1mg/ml  
 Source: Rabbit

Mol.Wt.: 14kDa  
 Clonality: Polyclonal

**Application:** WB 1:500-1:2000, IHC 1:50-1:200, ELISA(peptide) 1:20000-1:40000

**Reactivity:** Human,Mouse,Rat

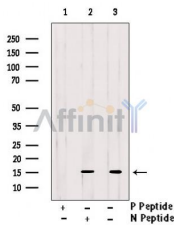
**Purification:** The antibody is from purified rabbit serum by affinity purification via sequential chromatography on phospho-peptide and non-phospho-peptide affinity columns.

**Specificity:** Phospho-FABP1 (Ser11) Antibody detects endogenous levels of FABP1 only when phosphorylated at Ser11.

**Immunogen:** A synthesized peptide derived from human FABP1 around the phosphorylation site of Ser11.

**Uniprot:** P07148

**Storage Condition and Buffer:** Rabbit IgG in phosphate buffered saline , pH 7.4, 150mM NaCl, 0.02% sodium azide and 50% glycerol.Store at -20 °C.Stable for 12 months from date of receipt.



Western blot analysis of extracts from HepG2 , using Phospho-FABP1(Ser11) Antibody. Lane1 was treated with phospho-blocking peptide, Lane2 was treated with non-phospho-blocking peptide.



AF7055 at 1/100 staining rat liver tissue sections by IHC-P. The tissue was formaldehyde fixed and a heat mediated antigen retrieval step in citrate buffer was performed. The tissue was then blocked and incubated with the antibody for 1.5 hours at 22°C. An HRP conjugated goat anti-rabbit antibody was used as the secondary antibody.

**IMPORTANT:** For western blot, incubate membrane with diluted primary Ab in 5% w/v milk , 1X TBS, 0.1% Tween@20 at 4°C with gentle shaking, overnight.