

Phospho-FBP1 (Tyr265) Antibody

Cat.#: AF7060	Concn.: 1mg/ml	Mol.Wt.: 37kDa
Size: 100ul,200ul	Source: Rabbit	Clonality: Polyclonal

Application: WB 1:500-1:2000, ELISA(peptide) 1:20000-1:40000

Reactivity: Human,Mouse,Rat

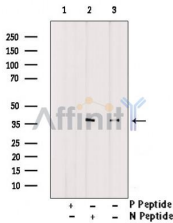
Purification: The antibody is from purified rabbit serum by affinity purification via sequential chromatography on phospho-peptide and non-phospho-peptide affinity columns.

Specificity: Phospho-FBP1 (Tyr265) Antibody detects endogenous levels of FBP1 only when phosphorylated at Tyr265.

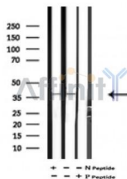
Immunogen: A synthesized peptide derived from human FBP1 around the phosphorylation site of Tyr265.

Uniprot: P09467

Storage Condition and Buffer: Rabbit IgG in phosphate buffered saline , pH 7.4, 150mM NaCl, 0.02% sodium azide and 50% glycerol.Store at -20 °C.Stable for 12 months from date of receipt.



Western blot analysis of extracts from Mouse kidney tissue, using Phospho-FBP1(Tyr265) Antibody. Lane1 was treated with phospho-blocking peptide, Lane2 was treated with non-phospho-blocking peptide.



Western blot analysis of extracts from Mouse kidney tissue sample,using Phospho-FBP1(Tyr265) Antibody(AF7060).

IMPORTANT: For western blot, incubate membrane with diluted primary Ab in 5% w/v milk , 1X TBS, 0.1% Tween@20 at 4°C with gentle shaking, overnight.

For Research Use Only. Not for use in diagnostic and therapeutic procedures. Not for resale without express authorization.