

Phospho-PINK1 (Ser228) Antibody

Cat.#: AF7081	Concn.: 1mg/ml	Mol.Wt.: 66kDa
Size: 100ul,200ul	Source: Rabbit	Clonality: Polyclonal

Application: WB 1:500-1:2000, IHC 1:50-1:200, ELISA(peptide) 1:20000-1:40000

Reactivity: Human,Mouse,Rat

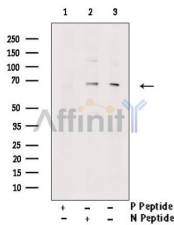
Purification: The antibody is from purified rabbit serum by affinity purification via sequential chromatography on phospho-peptide and non-phospho-peptide affinity columns.

Specificity: Phospho-PINK1 (Ser228) Antibody detects endogenous levels of PINK1 only when phosphorylated at Ser228.

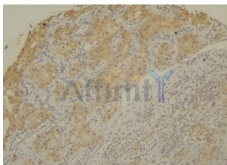
Immunogen: A synthesized peptide derived from human PINK1 around the phosphorylation site of Ser228.

Uniprot: Q9BXM7

Storage Condition and Buffer: Rabbit IgG in phosphate buffered saline , pH 7.4, 150mM NaCl, 0.02% sodium azide and 50% glycerol.Store at -20 °C.Stable for 12 months from date of receipt.



Western blot analysis of extracts from Jurkat , using Phospho-PINK1(Ser228) Antibody. Lane1 was treated with phospho-blocking peptide, Lane2 was treated with non-phospho-blocking peptide.



AF7081 at 1/100 staining human kidney tissue sections by IHC-P. The tissue was formaldehyde fixed and a heat mediated antigen retrieval step in citrate buffer was performed. The tissue was then blocked and incubated with the antibody for 1.5 hours at 22°C. An HRP conjugated goat anti-rabbit antibody was used as the secondary antibody.

IMPORTANT: For western blot, incubate membrane with diluted primary Ab in 5% w/v milk , 1X TBS, 0.1% Tween@20 at 4°C with gentle shaking, overnight.