

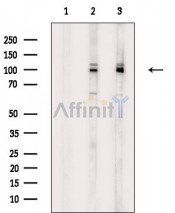
Phospho-CUL4B (Thr48) Antibody

Cat.#: AF7083
 Size: 100ul,200ul

Concn.: 1mg/ml
 Source: Rabbit

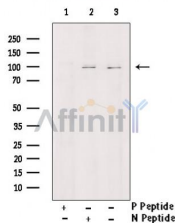
Mol.Wt.: 99kDa
 Clonality: Polyclonal

- Application:** WB 1:500-1:2000, IHC 1:50-1:200, IF/ICC 1:100-1:500, ELISA(peptide) 1:20000-1:40000
- Reactivity:** Human,Mouse,Rat
- Purification:** The antibody is from purified rabbit serum by affinity purification via sequential chromatography on phospho-peptide and non-phospho-peptide affinity columns.
- Specificity:** Phospho-CUL4B (Thr48) Antibody detects endogenous levels of CUL4B only when phosphorylated at Thr48.
- Immunogen:** A synthesized peptide derived from human CUL4B around the phosphorylation site of Thr48.
- Uniprot:** Q13620
- Storage Condition and Buffer:** Rabbit IgG in phosphate buffered saline , pH 7.4, 150mM NaCl, 0.02% sodium azide and 50% glycerol.Store at -20 °C.Stable for 12 months from date of receipt.

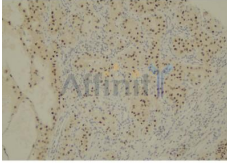


Western blot analysis of extracts from various samples, using Phospho-CUL4B (Thr48) Antibody.

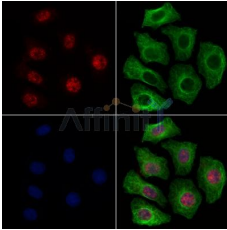
- Lane 1: 3T3-L1P6(heat shock treatment), blocked with antigen-specific peptides,
- Lane 2: 3T3-L1P6(heat shock treatment),
- Lane 3: PC12(serum starvation treatment).



Western blot analysis of extracts from 293T , using Phospho-CUL4B(Thr48) Antibody. Lane1 was treated with phospho-blocking peptide, Lane2 was treated with non-phospho-blocking peptide.



AF7083 at 1/100 staining human kidney tissue sections by IHC-P. The tissue was formaldehyde fixed and a heat mediated antigen retrieval step in citrate buffer was performed. The tissue was then blocked and incubated with the antibody for 1.5 hours at 22°C. An HRP conjugated goat anti-rabbit antibody was used as the secondary antibody.



AF7083 staining HeLa cells (4h of LPS treatment) by IF/ICC. The samples were fixed with PFA and permeabilized in 0.1% Triton X-100, then blocked in 10% serum for 45 minutes at 25°C. Samples were then incubated with primary Ab (AF7083 1:200) and mouse anti-beta tubulin Ab (T0023 1:200) for 1 hour at 37°C. An AlexaFluor594 conjugated goat anti-rabbit IgG (H+L) Ab (Red) and an AlexaFluor488 conjugated goat anti-mouse IgG (H+L) Ab (Green) were used as the secondary antibody.

IMPORTANT: For western blot, incubate membrane with diluted primary Ab in 5% w/v milk, 1X TBS, 0.1% Tween@20 at 4°C with gentle shaking, overnight.

For Research Use Only. Not for use in diagnostic and therapeutic procedures. Not for resale without express authorization.