

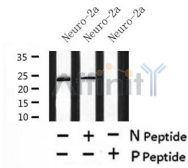
Phospho-LIN28A (Ser200) Ab

Cat.#: AF7438
Size: 100ul,200ul

Concn.: 1mg/ml
Source: Rabbit

Mol.Wt.: 23kDa
Clonality: Polyclonal

Application:	WB 1:500-1:2000
Reactivity:	Human,Mouse
Purification:	The Ab is from purified rabbit serum by affinity purification via sequential chromatography on phospho- and non-phospho-peptide affinity columns.
Specificity:	Phospho-LIN28A (Ser200) Ab detects endogenous levels of LIN28A only when phosphorylated at Ser200.
Immunogen:	A synthesized peptide derived from human LIN28A around the phosphorylation site of Ser200.
Uniprot:	Q9H9Z2
Subcellular Location:	Cytoplasm. Nucleus > nucleolus. Nucleolar localization observed in 10-15% of the nuclei in differentiated myotubes (By similarity). Shuttles between the cytoplasm and the nucleus. Localizes to cytoplasmic processing bodies and stress granules.
Tissue Specificity:	Expressed in embryonic stem cells, placenta and testis. Tends to be up-regulated in HER2-overexpressing breast tumors.
Similarity:	The CSD domain is required for function in muscle differentiation.The CCHC zinc fingers interact with the GGAG motif at the 3' end of let-7 miRNAs precursors, more generally they bind the 5'-NGNNG-3' consensus motif with micromolar affinity. The CSD domain recognizes the loop at the 5' end. The flexible linker allows accommodating variable sequences and lengths among let-7 family members.Belongs to the lin-28 family.
Storage Condition and Buffer:	Rabbit IgG in phosphate buffered saline , pH 7.4, 150mM NaCl, 0.02% sodium azide and 50% glycerol.Store at -20 °C.Stable for 12 months from date of receipt.



Western blot analysis of Phospho-LIN28A (Ser200) in lysates of Neuro-2a , using Phospho-LIN28A (Ser200) Ab(AF7438).

IMPORTANT: For western blot, incubate membrane with diluted primary Ab in 5% w/v milk , 1X TBS, 0.1% Tween@20 at 4°C with gentle shaking, overnight.

For Research Use Only. Not for use in diagnostic and therapeutic procedures. Not for resale without express authorization.