

GATA3 Antibody

Cat.#: AF7771	Concn.: 1mg/ml	Mol.Wt.: 48kDa, 42 kDa
Size: 50ul,100ul,200ul	Source: Rabbit	Clonality: Polyclonal

Application: WB 1:500-1:2000, ELISA(peptide) 1:20000-1:40000, ELISA(peptide) 1:20000-1:40000

Reactivity: Human,Mouse

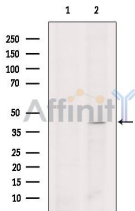
Purification: The antiserum was purified by peptide affinity chromatography using SulfoLink™ Coupling Resin (Thermo Fisher Scientific).

Specificity: GATA3 Antibody detects endogenous levels of total GATA3.

Immunogen: A synthesized peptide derived from human GATA3, corresponding to a region within the internal amino acids.

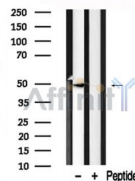
Uniprot: P23771

Storage Condition and Buffer: Rabbit IgG in phosphate buffered saline , pH 7.4, 150mM NaCl, 0.02% sodium azide and 50% glycerol.Store at -20 °C.Stable for 12 months from date of receipt.



Western blot analysis of extracts from Hela cells, using GATA3 Antibody. The lane on the left was treated with blocking peptide.

Observed bands: 42 kDa.



Western blot analysis of GATA3 in lysates of Jurkat , using GATA3 Antibody(AF7771).

IMPORTANT: For western blot, incubate membrane with diluted primary Ab in 5% w/v milk , 1X TBS, 0.1% Tween@20 at 4°C with gentle shaking, overnight.

For Research Use Only. Not for use in diagnostic and therapeutic procedures. Not for resale without express authorization.