

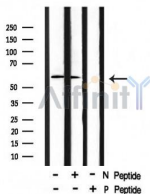
## Phospho-BACE (Ser498) Antibody

Cat.#: AF8003  
Size: 100ul,200ul

Concn.: 1mg/ml  
Source: Rabbit

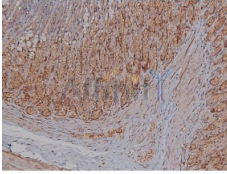
Mol.Wt.: 56kDa  
Clonality: Polyclonal

Application:	WB 1:1000-3000, IHC 1:50-1:200, ELISA(peptide) 1:20000-1:40000 *The optimal dilutions should be determined by the end user.
Reactivity:	Human,Mouse,Rat
Purification:	The antibody is from purified rabbit serum by affinity purification via sequential chromatography on phospho-peptide and non-phospho-peptide affinity columns.
Specificity:	Phospho-BACE (Ser498) Antibody detects endogenous levels of BACE only when phosphorylated at Ser498.
Immunogen:	A synthesized peptide derived from human BACE around the phosphorylation site of Ser498.
Uniprot:	P56817
Description:	FLAG tag Mouse mAb is part of the series of Tag antibodies, the excellent quality in the research. FLAG tag antibody is a highly sensitive and affinity PAB applicable to FLAG-tagged fusion protein detection. FLAG tag antibody can detect FLAG tags in internal, C-terminal, or N-terminal recombinant proteins.
Storage Condition and Buffer:	Rabbit IgG in phosphate buffered saline , pH 7.4, 150mM NaCl, 0.02% sodium azide and 50% glycerol.Store at -20 °C.Stable for 12 months from date of receipt.

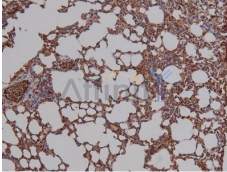


Western blot analysis of BACE (Phospho-Ser498) using HeLa whole cell lysates.

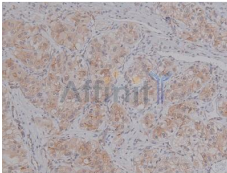
-/+ means absence or presence of N peptide (non-phospho peptide) and P peptide (phospho peptide).



AF8003 at 1/200 staining Rat gastric tissue sections by IHC-P. The tissue was formaldehyde fixed and a heat mediated antigen retrieval step in citrate buffer was performed. The tissue was then blocked and incubated with the antibody for 1.5 hours at 22°C. An HRP conjugated goat anti-rabbit antibody was used as the secondary antibody.



AF8003 at 1/200 staining Mouse lung tissue sections by IHC-P. The tissue was formaldehyde fixed and a heat mediated antigen retrieval step in citrate buffer was performed. The tissue was then blocked and incubated with the antibody for 1.5 hours at 22°C. An HRP conjugated goat anti-rabbit antibody was used as the secondary antibody.



AF8003 at 1/200 staining Human liver cancer tissue sections by IHC-P. The tissue was formaldehyde fixed and a heat mediated antigen retrieval step in citrate buffer was performed. The tissue was then blocked and incubated with the antibody for 1.5 hours at 22°C. An HRP conjugated goat anti-rabbit antibody was used as the secondary antibody.

**IMPORTANT:** For western blot, incubate membrane with diluted primary Ab in 5% w/v milk, 1X TBS, 0.1% Tween@20 at 4°C with gentle shaking, overnight.

For Research Use Only. Not for use in diagnostic and therapeutic procedures. Not for resale without express authorization.