

Phospho-ATM (Ser367) Antibody

Cat.#: AF8099
 Size: 100ul,200ul

Concn.: 1mg/ml
 Source: Rabbit

Mol.Wt.: 350kd
 Clonality: Polyclonal

Application: WB 1:1000-3000, ELISA(peptide) 1:20000-1:40000

Reactivity: Human,Mouse,Monkey

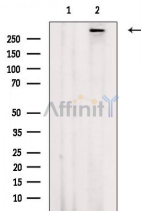
Purification: The antibody is from purified rabbit serum by affinity purification via sequential chromatography on phospho-peptide and non-phospho-peptide affinity columns.

Specificity: Phospho-ATM (Ser367) Antibody detects endogenous levels of ATM only when phosphorylated at Ser367.

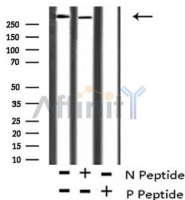
Immunogen: A synthesized peptide derived from human ATM around the phosphorylation site of Ser367.

Uniprot: Q13315

Storage Condition and Buffer: Rabbit IgG in phosphate buffered saline , pH 7.4, 150mM NaCl, 0.02% sodium azide and 50% glycerol.Store at -20 °C.Stable for 12 months from date of receipt.



Western blot analysis of extracts from VERO cells (serum starvation treatment), using Phospho-ATM (Ser367) Antibody. The lane on the left was treated with blocking peptide.



Western blot analysis of ATM (Phospho-Ser367) using HepG2 whole cell lysates.

-/+ means absence or presence of N peptide (non-phospho peptide) and P peptide (phospho peptide).

IMPORTANT: For western blot, incubate membrane with diluted primary Ab in 5% w/v milk, 1X TBS, 0.1% Tween@20 at 4°C with gentle shaking, overnight.