

Phospho-Tau (Ser717/Ser400) Antibody

Cat.#: AF8129	Concn.: 1mg/ml	Mol.Wt.: 50-80kDa
Size: 100ul,200ul	Source: Rabbit	Clonality: Polyclonal

Application: WB 1:1000-3000, ELISA(peptide) 1:20000-1:40000

Reactivity: Human,Mouse,Rat

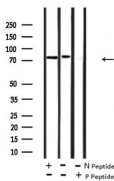
Purification: The antibody is from purified rabbit serum by affinity purification via sequential chromatography on phospho-peptide and non-phospho-peptide affinity columns.

Specificity: Phospho-Tau (Ser717/Ser400) Antibody detects endogenous levels of Tau only when phosphorylated at Ser717/400.

Immunogen: A synthesized peptide derived from human Tau around the phosphorylation site of Ser717/400.

Uniprot: P10636

Storage Condition and Buffer: Rabbit IgG in phosphate buffered saline , pH 7.4, 150mM NaCl, 0.02% sodium azide and 50% glycerol.Store at -20 °C.Stable for 12 months from date of receipt.



Western blot analysis of Tau (Phospho-Ser717/400) using IL PMA treated NIH-3T3 whole cell lysates.

-/+ means absence or presence of N peptide (non-phospho peptide) and P peptide(phospho peptide).

IMPORTANT: For western blot, incubate membrane with diluted primary Ab in 5% w/v milk , 1X TBS, 0.1% Tween@20 at 4°C with gentle shaking, overnight.

For Research Use Only. Not for use in diagnostic and therapeutic procedures. Not for resale without express authorization.