

## Phospho-Tau (Ser717/Ser400) Antibody

Cat.#: AF8129  
Size: 100ul,200ul

Concn.: 1mg/ml  
Source: Rabbit

Mol.Wt.: 50-80kDa  
Clonality: Polyclonal

**Application:** WB 1:1000-3000, ELISA(peptide) 1:20000-1:40000  
\*The optimal dilutions should be determined by the end user.

**Reactivity:** Human,Mouse,Rat

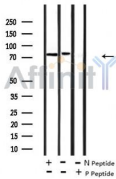
**Purification:** The antibody is from purified rabbit serum by affinity purification via sequential chromatography on phospho-peptide and non-phospho-peptide affinity columns.

**Specificity:** Phospho-Tau (Ser717/Ser400) Antibody detects endogenous levels of Tau only when phosphorylated at Ser717/400.

**Immunogen:** A synthesized peptide derived from human Tau around the phosphorylation site of Ser717/400.

**Uniprot:** P10636

**Storage Condition and Buffer:** Rabbit IgG in phosphate buffered saline , pH 7.4, 150mM NaCl, 0.02% sodium azide and 50% glycerol.Store at -20 °C.Stable for 12 months from date of receipt.



Western blot analysis of Tau (Phospho-Ser717/400) using IL PMA treated NIH-3T3 whole cell lysates.

-/+ means absence or presence of N peptide (non-phospho peptide) and P peptide(phospho peptide).

**IMPORTANT:** For western blot, incubate membrane with diluted primary Ab in 5% w/v milk , 1X TBS, 0.1% Tween@20 at 4°C with gentle shaking, overnight.

For Research Use Only. Not for use in diagnostic and therapeutic procedures. Not for resale without express authorization.