

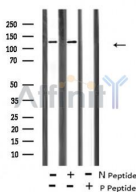
## Phospho-ABL1/2 (Tyr70/Tyr116) Antibody

Cat.#: AF8131  
Size: 100ul,200ul

Concn.: 1mg/ml  
Source: Rabbit

Mol.Wt.: 135kDa  
Clonality: Polyclonal

Application:	WB 1:1000-3000, IF/ICC 1:100-1:500, ELISA(peptide) 1:20000-1:40000
Reactivity:	Human,Mouse,Rat,Monkey
Purification:	The antibody is from purified rabbit serum by affinity purification via sequential chromatography on phospho-peptide and non-phospho-peptide affinity columns.
Specificity:	Phospho-ABL1/2 (Tyr70/Tyr116) Antibody detects endogenous levels of ABL1/2 only Phospho-ABL1/2 (Tyr70/Tyr116) Antibody detects endogenous levels of ABL1 when phosphorylated at Tyr70 or ABL2 when phosphorylated at Tyr116.
Immunogen:	A synthesized peptide derived from human ABL1/2 around the phosphorylation site of Tyr70/Tyr116.
Uniprot:	P00519/P42684
Storage Condition and Buffer:	Rabbit IgG in phosphate buffered saline , pH 7.4, 150mM NaCl, 0.02% sodium azide and 50% glycerol.Store at -20 °C.Stable for 12 months from date of receipt.



Western blot analysis of ABL1/2 (Phospho-Tyr70/Tyr116) using EGF treated A431 whole cell lysates.

-/+ means absence or presence of N peptide (non-phospho peptide) and P peptide (phospho peptide).



AF8131 staining COS7 by IF/ICC. The sample were fixed with PFA and permeabilized in 0.1% Triton X-100, then blocked in 10% serum for 45 minutes at 25°C. The primary antibody was diluted at 1/200 and incubated with the sample for 1 hour at 37°C. An Alexa Fluor 594 conjugated goat anti-rabbit IgG (H+L) Ab, diluted at 1/600, was used as the secondary antibody.

**IMPORTANT:** For western blot, incubate membrane with diluted primary Ab in 5% w/v milk , 1X TBS, 0.1% Tween@20 at 4°C with gentle shaking,

---

overnight.

For Research Use Only. Not for use in diagnostic and therapeutic procedures. Not for resale without express authorization.