

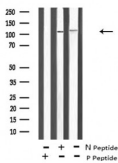
## Phospho-ERK5 (Thr219+Tyr221) Antibody

Cat.#: AF8146  
Size: 100ul,200ul

Concn.: 1mg/ml  
Source: Rabbit

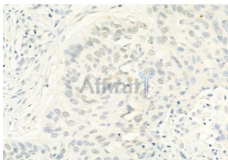
Mol.Wt.: 115 kDa  
Clonality: Polyclonal

Application:	WB 1:1000-3000, IHC 1:50-1:200, ELISA(peptide) 1:20000-1:40000
Reactivity:	Human,Mouse,Rat
Purification:	The antibody is from purified rabbit serum by affinity purification via sequential chromatography on phospho-peptide and non-phospho-peptide affinity columns.
Specificity:	Phospho-ERK5 (Thr219+Tyr221) Antibody detects endogenous levels of ERK5 only when phosphorylated at Thr219+Tyr221.
Immunogen:	A synthesized peptide derived from human ERK5 around the phosphorylation site of Thr219+Tyr221.
Uniprot:	Q13164
Storage Condition and Buffer:	Rabbit IgG in phosphate buffered saline , pH 7.4, 150mM NaCl, 0.02% sodium azide and 50% glycerol.Store at -20 °C.Stable for 12 months from date of receipt.

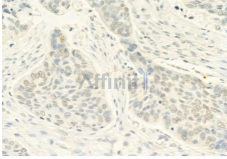


Western blot analysis of ERK5 (Phospho-Thr219+Tyr221) using HuvEc whole cell lysates.

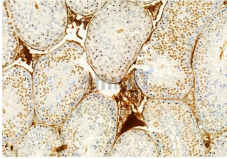
-/+ means absence or presence of N peptide □ non-phospho peptide) and P peptide(phospho peptide).



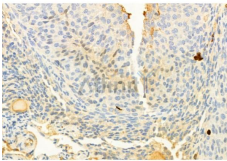
AF8146 at 1/100 staining Human lung cancer by IHC-P. The sample was formaldehyde fixed and a heat mediated antigen retrieval step in citrate buffer was performed. The sample was then blocked and incubated with the primary antibody at 4°C overnight. An HRP conjugated anti-Rabbit antibody was used as the secondary antibody.



AF8146 at 1/100 staining Human lung cancer by IHC-P. The sample was formaldehyde fixed and a heat mediated antigen retrieval step in citrate buffer was performed. The sample was then blocked and incubated with the primary antibody at 4°C overnight. An HRP conjugated anti-Rabbit antibody was used as the secondary antibody.



AF8146 at 1/100 staining Mouse testis tissue by IHC-P. The sample was formaldehyde fixed and a heat mediated antigen retrieval step in citrate buffer was performed. The sample was then blocked and incubated with the primary antibody at 4°C overnight. An HRP conjugated anti-Rabbit antibody was used as the secondary antibody.



AF8146 at 1/100 staining Mouse ovary tissue by IHC-P. The sample was formaldehyde fixed and a heat mediated antigen retrieval step in citrate buffer was performed. The sample was then blocked and incubated with the primary antibody at 4°C overnight. An HRP conjugated anti-Rabbit antibody was used as the secondary antibody.

**IMPORTANT:** For western blot, incubate membrane with diluted primary Ab in 5% w/v milk , 1X TBS, 0.1% Tween@20 at 4°C with gentle shaking, overnight.

For Research Use Only. Not for use in diagnostic and therapeutic procedures. Not for resale without express authorization.