

## Phospho-ATM (Ser1981) Antibody

Cat.#: AF8225	Concn.: 1mg/ml	Mol.Wt.: 350kd
Size: 100ul,200ul	Source: Rabbit	Clonality: Polyclonal

**Application:** WB 1:1000-3000, ELISA(peptide) 1:20000-1:40000

**Reactivity:** Human,Mouse

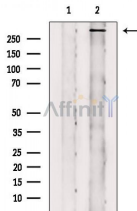
**Purification:** The antibody is from purified rabbit serum by affinity purification via sequential chromatography on phospho-peptide and non-phospho-peptide affinity columns.

**Specificity:** Phospho-ATM (Ser1981) Antibody detects endogenous levels of ATM only when phosphorylated at Ser1981.

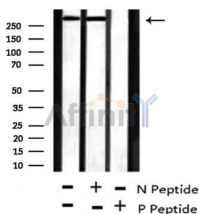
**Immunogen:** A synthesized peptide derived from human ATM around the phosphorylation site of Ser1981.

**Uniprot:** Q13315

**Storage Condition and Buffer:** Rabbit IgG in phosphate buffered saline , pH 7.4, 150mM NaCl, 0.02% sodium azide and 50% glycerol.Store at -20 °C.Stable for 12 months from date of receipt.



Western blot analysis of extracts from B16F10 cells(H2O2 treatment), using Phospho-ATM (Ser1981) Antibody. The lane on the left was treated with blocking peptide.



Western blot analysis of ATM (Phospho-Ser1981) using UV treated NIH-3T3 whole cell lysates.

-/+ means absence or presence of N peptide (non-phospho peptide) and P peptide(phospho peptide).

**IMPORTANT:** For western blot, incubate membrane with diluted primary Ab in 5% w/v milk , 1X TBS, 0.1% Tween@20 at 4°C with gentle shaking, overnight.