

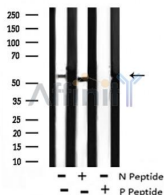
Phospho-BORA (Ser497) Antibody

Cat.#: AF8249
Size: 100ul,200ul

Concn.: 1mg/ml
Source: Rabbit

Mol.Wt.: 61kDa
Clonality: Polyclonal

Application:	WB 1:1000-3000, ELISA(peptide) 1:20000-1:40000
Reactivity:	Human,Rat
Purification:	The antibody is from purified rabbit serum by affinity purification via sequential chromatography on phospho-peptide and non-phospho-peptide affinity columns.
Specificity:	Phospho-BORA (Ser497) Antibody detects endogenous levels of BORA only when phosphorylated at Ser497.
Immunogen:	A synthesized peptide derived from human BORA around the phosphorylation site of Ser497.
Uniprot:	Q6PGQ7
Storage Condition and Buffer:	Rabbit IgG in phosphate buffered saline , pH 7.4, 150mM NaCl, 0.02% sodium azide and 50% glycerol.Store at -20 °C.Stable for 12 months from date of receipt.



Western blot analysis of BORA (Phospho-Ser497) using Forskolin treated 293 whole cell lysates.

-/+ means absence or presence of N peptide (non-phospho peptide) and P peptide (phospho peptide).

IMPORTANT: For western blot, incubate membrane with diluted primary Ab in 5% w/v milk , 1X TBS, 0.1% Tween@20 at 4°C with gentle shaking, overnight.

For Research Use Only. Not for use in diagnostic and therapeutic procedures. Not for resale without express authorization.