

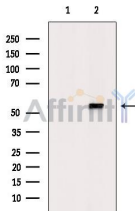
Phospho-CEP55 (Ser425) Antibody

Cat.#: AF8254
 Size: 100ul,200ul

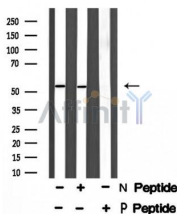
Concn.: 1mg/ml
 Source: Rabbit

Mol.Wt.: 54 KD
 Clonality: Polyclonal

Application:	WB 1:1000-3000, ELISA(peptide) 1:20000-1:40000
Reactivity:	Human,Mouse
Purification:	The antibody is from purified rabbit serum by affinity purification via sequential chromatography on phospho-peptide and non-phospho-peptide affinity columns.
Specificity:	Phospho-CEP55 (Ser425) Antibody detects endogenous levels of CEP55 only when phosphorylated at Ser425.
Immunogen:	A synthesized peptide derived from human CEP55 around the phosphorylation site of Ser425.
Uniprot:	Q53EZ4
Storage Condition and Buffer:	Rabbit IgG in phosphate buffered saline , pH 7.4, 150mM NaCl, 0.02% sodium azide and 50% glycerol.Store at -20 °C.Stable for 12 months from date of receipt.



Western blot analysis of extracts from heat-shock treated MDA-MB-231 cells, using Phospho-CEP55 (Ser425) Antibody. The lane on the left was treated with blocking peptide.



Western blot analysis of CEP55 (Phospho-Ser425) using EGF treated NIH-3T3 whole cell lysates.

-/+ means absence or presence of N peptide (non-phospho peptide) and P peptide (phospho peptide).

IMPORTANT: For western blot, incubate membrane with diluted primary Ab in 5% w/v milk , 1X TBS, 0.1% Tween@20 at 4°C with gentle shaking, overnight.