

Phospho-CUTL1 (Ser1237) Antibody

Cat.#: AF8263	Concn.: 1mg/ml	Mol.Wt.: 164 KD
Size: 100ul,200ul	Source: Rabbit	Clonality: Polyclonal

Application: WB 1:1000-3000, IHC 1:50-1:200, ELISA(peptide)
 1:20000-1:40000

Reactivity: Human,Mouse,Rat

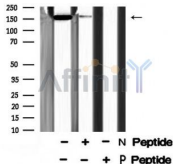
Purification: The antibody is from purified rabbit serum by affinity purification via sequential chromatography on phospho-peptide and non-phospho-peptide affinity columns.

Specificity: Phospho-CUTL1 (Ser1237) Antibody detects endogenous levels of CUTL1 only when phosphorylated at Ser1237.

Immunogen: A synthesized peptide derived from human CUTL1 around the phosphorylation site of Ser1237.

Uniprot: P39880

Storage Condition and Buffer: Rabbit IgG in phosphate buffered saline , pH 7.4, 150mM NaCl, 0.02% sodium azide and 50% glycerol.Store at -20 °C.Stable for 12 months from date of receipt.

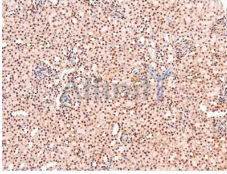


Western blot analysis of CUTL1 (Phospho-Ser1237) using EGF treated A431 whole cell lysates.

-/+ means absence or presence of N peptide (non-phospho peptide) and P peptide(phospho peptide).



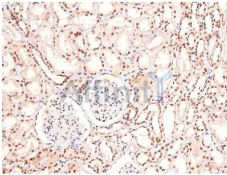
AF8263 at 1/200 staining Rat kidney tissue sections by IHC-P. The tissue was formaldehyde fixed and a heat mediated antigen retrieval step in citrate buffer was performed. The tissue was then blocked and incubated with the antibody for 1.5 hours at 22°C. An HRP conjugated goat anti-rabbit antibody was used as the secondary antibody.



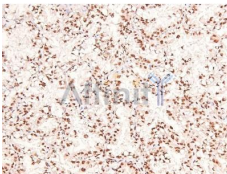
AF8263 at 1/200 staining Mouse kidney tissue sections by IHC-P. The tissue was formaldehyde fixed and a heat mediated antigen retrieval step in citrate buffer was performed. The tissue was then blocked and incubated with the antibody for 1.5 hours at 22°C. An HRP conjugated goat anti-rabbit antibody was used as the secondary antibody.



AF8263 at 1/200 staining Mouse kidney tissue sections by IHC-P. The tissue was formaldehyde fixed and a heat mediated antigen retrieval step in citrate buffer was performed. The tissue was then blocked and incubated with the antibody for 1.5 hours at 22°C. An HRP conjugated goat anti-rabbit antibody was used as the secondary antibody.



AF8263 at 1/200 staining Human kidney tissue sections by IHC-P. The tissue was formaldehyde fixed and a heat mediated antigen retrieval step in citrate buffer was performed. The tissue was then blocked and incubated with the antibody for 1.5 hours at 22°C. An HRP conjugated goat anti-rabbit antibody was used as the secondary antibody.



AF8263 at 1/200 staining Human lung cancer tissue sections by IHC-P. The tissue was formaldehyde fixed and a heat mediated antigen retrieval step in citrate buffer was performed. The tissue was then blocked and incubated with the antibody for 1.5 hours at 22°C. An HRP conjugated goat anti-rabbit antibody was used as the secondary antibody.

IMPORTANT: For western blot, incubate membrane with diluted primary Ab in 5% w/v milk , 1X TBS, 0.1% Tween@20 at 4°C with gentle shaking, overnight.

For Research Use Only. Not for use in diagnostic and therapeutic procedures. Not for resale without express authorization.