

## Phospho-FOXO3A (Ser318) Antibody

Cat.#: AF8272  
 Size: 100ul,200ul

Concn.: 1mg/ml  
 Source: Rabbit

Mol.Wt.: 97kDa  
 Clonality: Polyclonal

**Application:** WB 1:1000-3000, ELISA(peptide) 1:20000-1:40000

**Reactivity:** Human,Mouse,Rat

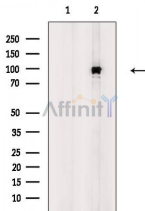
**Purification:** The antibody is from purified rabbit serum by affinity purification via sequential chromatography on phospho-peptide and non-phospho-peptide affinity columns.

**Specificity:** Phospho-FOXO3A (Ser318) Antibody detects endogenous levels of FOXO3A only when phosphorylated at Ser318.

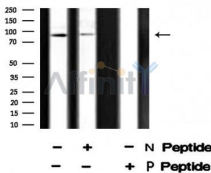
**Immunogen:** A synthesized peptide derived from human FOXO3A around the phosphorylation site of Ser318.

**Uniprot:** O43524

**Storage Condition and Buffer:** Rabbit IgG in phosphate buffered saline , pH 7.4, 150mM NaCl, 0.02% sodium azide and 50% glycerol.Store at -20 °C.Stable for 12 months from date of receipt.



Western blot analysis of extracts from 3T3-L1P6(heat shock treatment), using Phospho-FOXO3A (Ser318) Antibody. The lane on the left was treated with blocking peptide.



Western blot analysis FKHL1 (Phospho-Ser318) using A549 whole cell lysates.

-/+ means absence or presence of N peptide (non-phospho peptide) and P peptide(phospho peptide).

**IMPORTANT:** For western blot, incubate membrane with diluted primary Ab in 5% w/v milk , 1X TBS, 0.1% Tween@20 at 4°C with gentle shaking, overnight.

For Research Use Only. Not for use in diagnostic and therapeutic procedures. Not for resale without express authorization.