

## Phospho-MAP2 (Thr1616) Antibody

Cat.#: AF8280	Concn.: 1mg/ml	Mol.Wt.: 55-75(2c/2d),280(2a/2b)kd,62kDa
Size: 100ul,200ul	Source: Rabbit	Clonality: Polyclonal

**Application:** WB 1:1000-3000, ELISA(peptide) 1:20000-1:40000

**Reactivity:** Human,Mouse,Rat,Monkey

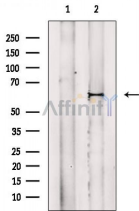
**Purification:** The antibody is from purified rabbit serum by affinity purification via sequential chromatography on phospho-peptide and non-phospho-peptide affinity columns.

**Specificity:** Phospho-MAP2 (Thr1616) Antibody detects endogenous levels of MAP2 only when phosphorylated at Thr1616.

**Immunogen:** A synthesized peptide derived from human MAP2 around the phosphorylation site of Thr1616.

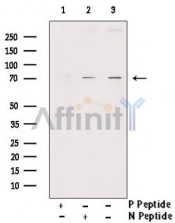
**Uniprot:** P11137

**Storage Condition and Buffer:** Rabbit IgG in phosphate buffered saline , pH 7.4, 150mM NaCl, 0.02% sodium azide and 50% glycerol.Store at -20 °C.Stable for 12 months from date of receipt.

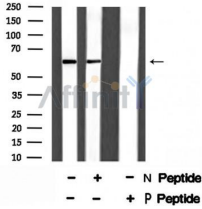


Western blot analysis of extracts from Rat brain, using Phospho-MAP2 (Thr1616) Antibody. The lane on the left was treated with blocking peptide.

Observed bands: 62kDa



Western blot analysis of extracts from etoposide treated COS7, using Phospho-MAP2 (Thr1616) Antibody. Lane1 was treated with phospho-blocking peptide, Lane2 was treated with non-phospho-blocking peptide.



Western blot analysis of MAP2 (Phospho-Thr1616) using etoposide treated COS7 whole cell lysates.  
-/+ means absence or presence of N peptide (non-phospho peptide) and P peptide (phospho peptide).

**IMPORTANT:** For western blot, incubate membrane with diluted primary Ab in 5% w/v milk, 1X TBS, 0.1% Tween@20 at 4°C with gentle shaking, overnight.

For Research Use Only. Not for use in diagnostic and therapeutic procedures. Not for resale without express authorization.