

## Phospho-PDE6G (Thr22) Antibody

|                   |                |                       |
|-------------------|----------------|-----------------------|
| Cat.#: AF8299     | Concn.: 1mg/ml | Mol.Wt.: 9KD          |
| Size: 100ul,200ul | Source: Rabbit | Clonality: Polyclonal |

**Application:** WB 1:1000-3000, ELISA(peptide) 1:20000-1:40000

**Reactivity:** Human,Mouse,Rat

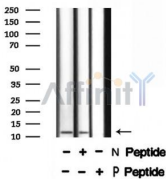
**Purification:** The antibody is from purified rabbit serum by affinity purification via sequential chromatography on phospho-peptide and non-phospho-peptide affinity columns.

**Specificity:** Phospho-PDE6G (Thr22) Antibody detects endogenous levels of PDE6G only when phosphorylated at Thr22.

**Immunogen:** A synthesized peptide derived from human PDE6G around the phosphorylation site of Thr22.

**Uniprot:** P18545

**Storage Condition and Buffer:** Rabbit IgG in phosphate buffered saline , pH 7.4, 150mM NaCl, 0.02% sodium azide and 50% glycerol.Store at -20 °C.Stable for 12 months from date of receipt.



Western blot analysis of PDE6G (Phospho-Thr22) using EGF treated 293 whole cell lysates.

-/+ means absence or presence of N peptide (non-phospho peptide) and P peptide(phospho peptide).

**IMPORTANT:** For western blot, incubate membrane with diluted primary Ab in 5% w/v milk , 1X TBS, 0.1% Tween@20 at 4°C with gentle shaking, overnight.

For Research Use Only. Not for use in diagnostic and therapeutic procedures. Not for resale without express authorization.