

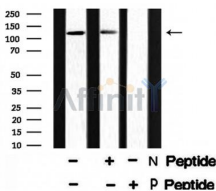
Phospho-ACK1 (Tyr857+Tyr858)[Tyr859+Tyr860] Antibody

Cat.#: AF8338
Size: 100ul,200ul

Concn.: 1mg/ml
Source: Rabbit

Mol.Wt.: 115KD
Clonality: Polyclonal

Application:	WB 1:1000-3000, ELISA(peptide) 1:20000-1:40000
Reactivity:	Human,Mouse
Purification:	The antibody is from purified rabbit serum by affinity purification via sequential chromatography on phospho-peptide and non-phospho-peptide affinity columns.
Specificity:	Phospho-ACK1 (Tyr857+Tyr858) Antibody detects endogenous levels of ACK1 only when phosphorylated at Tyr859+Tyr860, which site historically referenced as Tyr857+Tyr858.
Immunogen:	A synthesized peptide derived from human ACK1 around the phosphorylation site of Tyr857 and Tyr858.
Uniprot:	Q07912
Storage Condition and Buffer:	Rabbit IgG in phosphate buffered saline , pH 7.4, 150mM NaCl, 0.02% sodium azide and 50% glycerol.Store at -20 °C.Stable for 12 months from date of receipt.



Western blot analysis of extracts from Mouse heart tissue, using Phospho-Ack1 (Tyr857+Tyr858) Antibody.

-/+ means absence or presence of N peptide (non-phospho peptide) and P peptide(phospho peptide).

IMPORTANT: For western blot, incubate membrane with diluted primary Ab in 5% w/v milk , 1X TBS, 0.1% Tween@20 at 4°C with gentle shaking, overnight.

For Research Use Only. Not for use in diagnostic and therapeutic procedures. Not for resale without express authorization.