

Phospho-ATM (Ser794) Antibody

Cat.#: AF8411	Concn.: 1mg/ml	Mol.Wt.: 350kd
Size: 100ul,200ul	Source: Rabbit	Clonality: Polyclonal

Application: WB 1:1000-3000, ELISA(peptide) 1:20000-1:40000

Reactivity: Human

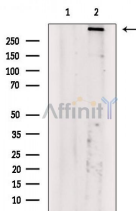
Purification: The antibody is from purified rabbit serum by affinity purification via sequential chromatography on phospho-peptide and non-phospho-peptide affinity columns.

Specificity: Phospho-ATM (Ser794) Antibody detects endogenous levels of ATM only when phosphorylated at Ser794.

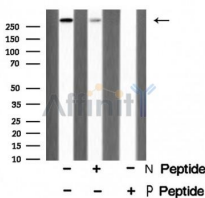
Immunogen: A synthesized peptide derived from human ATM around the phosphorylation site of Ser794.

Uniprot: Q13315

Storage Condition and Buffer: Rabbit IgG in phosphate buffered saline , pH 7.4, 150mM NaCl, 0.02% sodium azide and 50% glycerol.Store at -20 °C.Stable for 12 months from date of receipt.



Western blot analysis of extracts from HepG2 cells(heat shock treatment), using Phospho-ATM (Ser794) Antibody. The lane on the left was treated with blocking peptide.



Western blot analysis of ATM (Phospho-Ser794) using HeLa whole cell lysates.

-/+ means absence or presence of N peptide (non-phospho peptide) and P peptide(phospho peptide).

IMPORTANT: For western blot, incubate membrane with diluted primary Ab in 5% w/v milk , 1X TBS, 0.1% Tween@20 at 4°C with gentle shaking, overnight.

For Research Use Only. Not for use in diagnostic and therapeutic procedures. Not for resale without express authorization.