

Phospho-SYN2 (Ser425) Ab

Cat.#: AF8514
 Size: 100ul,200ul

Concn.: 1mg/ml
 Source: Rabbit

Mol.Wt.: 78 kDa
 Clonality: Polyclonal

Application: WB 1:1000-3000

Reactivity: Human,Mouse,Rat

Purification: The Ab is from purified rabbit serum by affinity purification via sequential chromatography on phospho- and non-phospho-peptide affinity columns.

Specificity: SYN2 (Phospho-Ser425) Ab detects endogenous levels of SYN2 only when phosphorylated at Ser425.

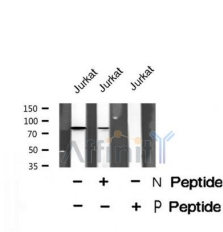
Immunogen: A synthesized peptide derived from human SYN2 (Phospho-Ser425).

Uniprot: Q92777

Tissue Specificity: Central and peripheral nervous systems.

Similarity: The A region binds phospholipids with a preference for negatively charged species.Belongs to the synapsin family.

Storage Condition and Buffer: Rabbit IgG in phosphate buffered saline , pH 7.4, 150mM NaCl, 0.02% sodium azide and 50% glycerol.Store at -20 °C.Stable for 12 months from date of receipt.



Western blot analysis SYN2 (Phospho-Ser425) using Jurkat whole cell lysates

IMPORTANT: For western blot, incubate membrane with diluted primary Ab in 5% w/v milk , 1X TBS, 0.1% Tween@20 at 4°C with gentle shaking, overnight.

For Research Use Only. Not for use in diagnostic and therapeutic procedures. Not for resale without express authorization.