

Phospho-AXL (Tyr698) Antibody

Cat.#: AF8522	Concn.: 1mg/ml	Mol.Wt.: 99kDa
Size: 100ul,200ul	Source: Rabbit	Clonality: Polyclonal

Application: WB 1:1000-3000, IF/ICC 1:100-1:500, ELISA(peptide) 1:20000-1:40000

Reactivity: Human,Mouse,Rat

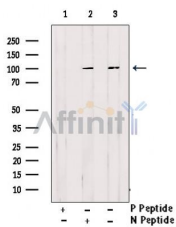
Purification: The antibody is from purified rabbit serum by affinity purification via sequential chromatography on phospho-peptide and non-phospho-peptide affinity columns.

Specificity: Phospho-AXL (Tyr698) Antibody detects endogenous levels of AXL only when phosphorylated at Tyr698.

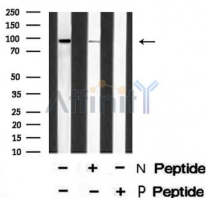
Immunogen: A synthesized peptide derived from human AXL around the phosphorylation site of Tyr698.

Uniprot: P30530

Storage Condition and Buffer: Rabbit IgG in phosphate buffered saline , pH 7.4, 150mM NaCl, 0.02% sodium azide and 50% glycerol.Store at -20 °C.Stable for 12 months from date of receipt.



Western blot analysis of extracts from PMA treated K562, using Phospho-AXL (Tyr698) Antibody. Lane1 was treated with phospho-blocking peptide, Lane2 was treated with non-phospho-blocking peptide.



Western blot analysis of AXL (Phospho-Tyr698) using PMA treated K562 whole cell lysates.

-/+ means absence or presence of N peptide (non-phospho peptide) and P peptide (phospho peptide).



AF8522 staining HuvEc by IF/ICC. The sample were fixed with PFA and permeabilized in 0.1% Triton X-100, then blocked in 10% serum for 45 minutes at 25°C. The primary antibody was diluted at 1/200 and incubated with the sample for 1 hour at 37°C. An Alexa Fluor 594 conjugated goat anti-rabbit IgG (H+L) Ab, diluted at 1/600, was used as the secondary antibody.

IMPORTANT: For western blot, incubate membrane with diluted primary Ab in 5% w/v milk , 1X TBS, 0.1% Tween@20 at 4°C with gentle shaking, overnight.

For Research Use Only. Not for use in diagnostic and therapeutic procedures. Not for resale without express authorization.