

SNCG (breast cancer-specific protein 1) Antibody

Cat.#: BF0110
Size: 50ul,100ul,200ul

Concn.: 1mg/ml
Source: Mouse

Mol.Wt.: 13kDa
Clonality: Monoclonal

| | |
|-------------------------------|---|
| Application: | ELISA 1:10000, WB 1:500-1:2000, IHC 1:200-1:1000 *The optimal dilutions should be determined by the end user. |
| Reactivity: | Human |
| Purification: | Affinity-chromatography. |
| Specificity: | SNCG (breast cancer-specific protein 1) antibody detects endogenous levels of total SNCG (breast cancer-specific protein 1). |
| Immunogen: | Purified recombinant fragment of human SNCG (breast cancer-specific protein 1) expressed in E. Coli. |
| Uniprot: | O76070 |
| Description: | SNCG(also designated gamma-synuclein or breast cancer-specific protein 1),with 127-amino acid protein(about 14kDa), belongs to the synuclein family, which also includes alpha- and beta- synuclein.Three synucleins are located in the neuronal cytosol and enriched in presynaptic terminals,while SNCG is also expressed in many other non-neuronal tissues. SNCG is abnormally expressed in a high percentage of tumor tissues of diversified cancer types, including liver, esophagus, colon, gastric, lung, prostate, cervical, and breast cancer, but rarely expressed in tumor-matched nonneoplastic adjacent tissues. High levels of SNCG have been identified in advanced breast carcinomas suggesting a correlation between overexpression of SNCG and breast tumor development. |
| Storage Condition and Buffer: | Mouse IgG1 in phosphate buffered saline (without Mg ²⁺ and Ca ²⁺), pH 7.4, 150mM NaCl, 0.02% sodium azide and 50% glycerol.Store at -20 °C.Stable for 12 months from date of receipt. |

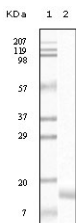


Figure 1: Western blot analysis using SNCG mouse mAb against truncated SNCG recombinant protein.

IMPORTANT: For western blot, incubate membrane with diluted primary Ab in 5% w/v milk , 1X TBS, 0.1% Tween@20 at 4°C with gentle shaking, overnight.

For Research Use Only. Not for use in diagnostic and therapeutic procedures. Not for resale without express authorization.