

## SOD1 Antibody

Cat.#: BF0447  
Size: 50ul,100ul,200ul

Concn.: 1mg/ml  
Source: Mouse

Mol.Wt.: 18kDa  
Clonality: Monoclonal

Application: ELISA 1:10000, WB 1:500-1:2000, IF/ICC 1:200-1:1000, FCM 1:200-1:400

Reactivity: Human,Mouse

Purification: Affinity-chromatography.

Specificity: SOD1 antibody detects endogenous levels of total SOD1.

Immunogen: Purified recombinant fragment of human SOD1 expressed in E. Coli.

Uniprot: P00441

Description: SOD1 (superoxide dismutase 1, soluble), also known as ALS. The protein binds copper and zinc ions and is one of two isozymes responsible for destroying free superoxide radicals in the body. The encoded isozyme is a soluble cytoplasmic protein, acting as a homodimer to convert naturally-occurring but harmful superoxide radicals to molecular oxygen and hydrogen peroxide. The other isozyme is a mitochondrial protein. Mutations in this gene have been implicated as causes of familial amyotrophic lateral sclerosis (ALS), a progressive degenerative disease of motor neurons. Rare transcript variants have been reported for this gene.

Storage Condition and Buffer: Mouse IgG1 in phosphate buffered saline (without Mg<sup>2+</sup> and Ca<sup>2+</sup>), pH 7.4, 150mM NaCl, 0.02% sodium azide and 50% glycerol.Store at -20 °C.Stable for 12 months from date of receipt.

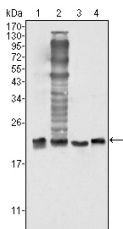


Figure 1: Western blot analysis using SOD1 mouse mAb against HeLa (1), NIH/3T3 (2), A549 (3) and A431 (4) cell lysate.

**IMPORTANT:** For western blot, incubate membrane with diluted primary Ab in 5% w/v milk, 1X TBS, 0.1% Tween@20 at 4°C with gentle shaking, overnight.



**Affinity Biosciences**

website:[www.affbiotech.com](http://www.affbiotech.com)

order:[order@affbiotech.com](mailto:order@affbiotech.com)

---

For Research Use Only. Not for use in diagnostic and therapeutic procedures. Not for resale without express authorization.