

SNCA Antibody

Cat.#: BF0582
Size: 50ul,100ul,200ul

Concn.: 1mg/ml
Source: Mouse

Mol.Wt.: 18kDa
Clonality: Monoclonal

Application: ELISA 1:10000, WB 1:500-1:2000, IHC 1:200-1:1000
*The optimal dilutions should be determined by the end user.

Reactivity: Human

Purification: Affinity-chromatography.

Specificity: SNCA antibody detects endogenous levels of total SNCA.

Immunogen: Purified recombinant fragment of human SNCA expressed in E. Coli.

Uniprot: P37840

Description: Alpha-synuclein is a member of the synuclein family, which also includes beta- and gamma-synuclein. Synucleins are abundantly expressed in the brain and alpha- and beta-synuclein inhibit phospholipase D2 selectively. SNCA may serve to integrate presynaptic signaling and membrane trafficking. Defects in SNCA have been implicated in the pathogenesis of Parkinson disease. SNCA peptides are a major component of amyloid plaques in the brains of patients with Alzheimer's disease. Two alternatively spliced transcripts of SNCA have been identified. Additional splicing may be present but the full-length nature of these variants has not been determined.

Storage Condition and Buffer: Mouse IgG1 in phosphate buffered saline (without Mg²⁺ and Ca²⁺), pH 7.4, 150mM NaCl, 0.02% sodium azide and 50% glycerol. Store at -20 °C. Stable for 12 months from date of receipt.

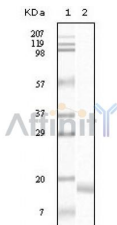


Figure 1: Western blot analysis using SNCA mouse mAb against truncated SNCA recombinant protein.

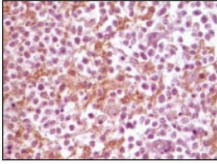


Figure 2: Immunohistochemical analysis of paraffin-embedded human glioma tissue, showing membrane localization using SNCA mouse mAb with DAB staining.

IMPORTANT: For western blot, incubate membrane with diluted primary Ab in 5% w/v milk , 1X TBS, 0.1% Tween@20 at 4°C with gentle shaking, overnight.

For Research Use Only. Not for use in diagnostic and therapeutic procedures. Not for resale without express authorization.