

Prealbumin antibody

Cat.#: BF0713
Size: 50ul,100ul,200ul

Concn.: 1mg/ml
Source: Mouse

Mol.Wt.: 16 kDa
Clonality: Monoclonal

Application: WB 1:500-1:2000, IHC 1:50-1:200

Reactivity: Human

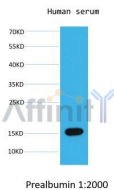
Purification: Affinity-chromatography.

Specificity: Prealbumin mouse monoclonal antibody detects endogenous levels of Prealbumin

Immunogen: A synthetic peptide

Uniprot: P02766

Storage Condition and Buffer: Mouse IgG1 in phosphate buffered saline (without Mg²⁺ and Ca²⁺), pH 7.4, 150mM NaCl, 0.02% sodium azide and 50% glycerol.Store at -20 °C.Stable for 12 months from date of receipt.



Western blot analysis of human serum,using Prealbumin mouse monoclonal antibody.

IMPORTANT: For western blot, incubate membrane with diluted primary Ab in 5% w/v milk, 1X TBS, 0.1% Tween@20 at 4°C with gentle shaking, overnight.

For Research Use Only. Not for use in diagnostic and therapeutic procedures. Not for resale without express authorization.