

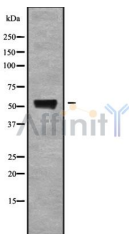
RHCG Ab

Cat.#: DF10084
 Size: 100ul,200ul

Concn.: 1mg/ml
 Source: Rabbit

Mol.Wt.: 53 kDa
 Clonality: Polyclonal

Application:	WB 1:1000-3000
Reactivity:	Human
Purification:	The antiserum was purified by peptide affinity chromatography using SulfoLink™ Coupling Resin (Thermo Fisher Scientific).
Specificity:	RHCG Ab detects endogenous levels of total RHCG.
Immunogen:	A synthesized peptide derived from human RHCG.
Uniprot:	Q9UBD6
Subcellular Location:	Apical cell membrane. Also detected at the basolateral membrane and in subapical vesicles.
Tissue Specificity:	Expressed in brain, testis, placenta, pancreas, esophagus and prostate. Expressed in squamous epithelial tissues (at protein level). According to PubMed:11062476, specifically expressed in kidney.
Similarity:	Belongs to the ammonium transporter (TC 2.A.49) family. Rh subfamily. [View classification]
Storage Condition and Buffer:	Rabbit IgG in phosphate buffered saline , pH 7.4, 150mM NaCl, 0.02% sodium azide and 50% glycerol.Store at -20 °C.Stable for 12 months from date of receipt.



Western blot analysis of RHCG using 293 whole cell lysates

IMPORTANT: For western blot, incubate membrane with diluted primary Ab in 5% w/v milk , 1X TBS, 0.1% Tween@20 at 4°C with gentle shaking, overnight.